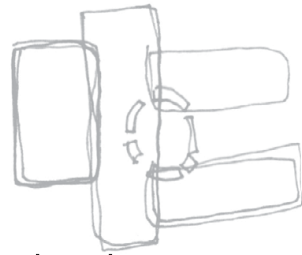
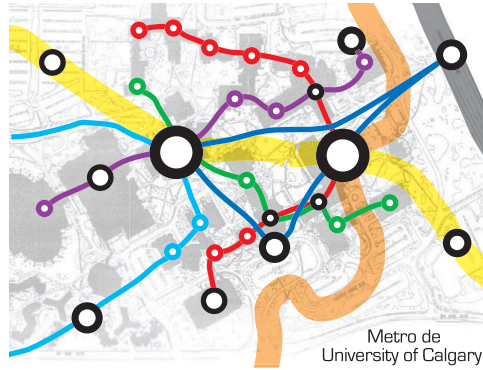


Information

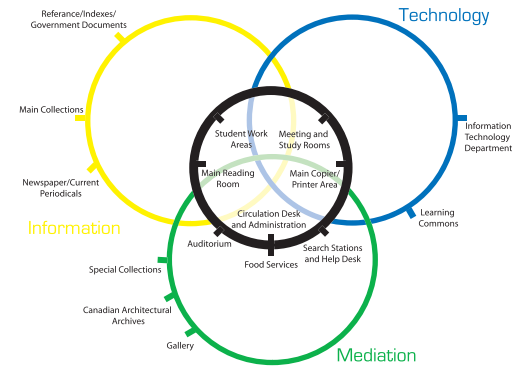


the hub

like a metro station the new information commons library will act as a major connector for the campus. visual and physical connectivity is critical to the idea. a central atrium space -the hub of the library station will provide daylight and openness to the users. the spaces are to provide opportunities for the users which creates a balance between coming and going.

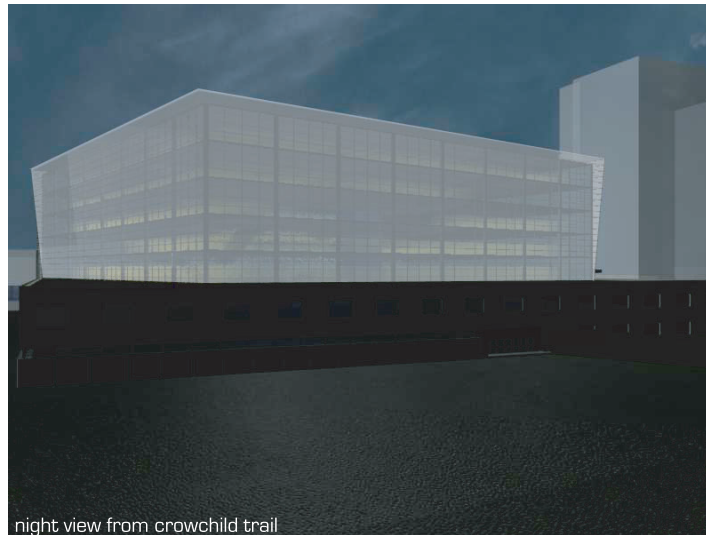


Metro de University of Calgary



N

D



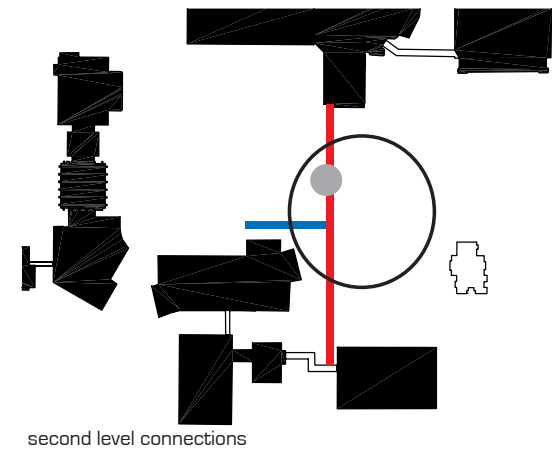
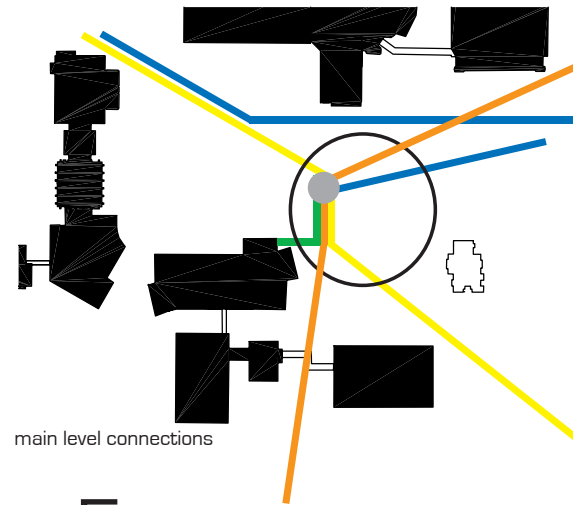
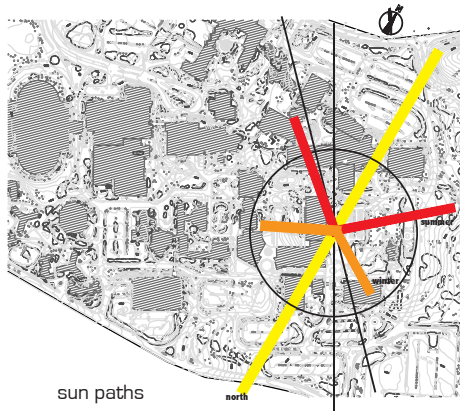
night view from crowchild trail



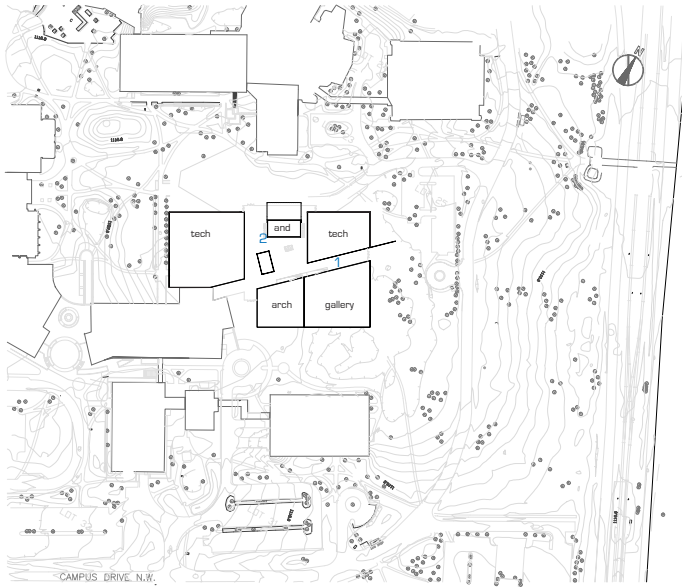
morning view from student union

Commons

University of



Calgary



main level 1:2000



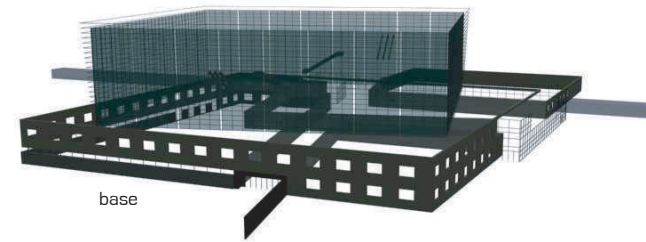
second level 1:2000



skin



structure



base

2



entry from north - view of hub

3



entry from south - view of library entry

4



view of hub from level 2

5



view of reading room oasis - level 4

A sustainable architecture

Sustainability a VERTICAL STUDIO

a new hub for the heart of campus

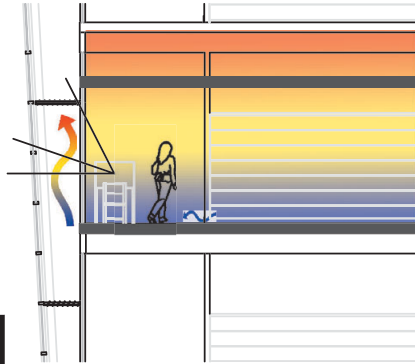
stack effect

the central atrium space allows warm air to naturally rise due to the stack effect. the surrounding program spaces are regulated with cooler/warmer fresh air provided through book stack vents along the floor.

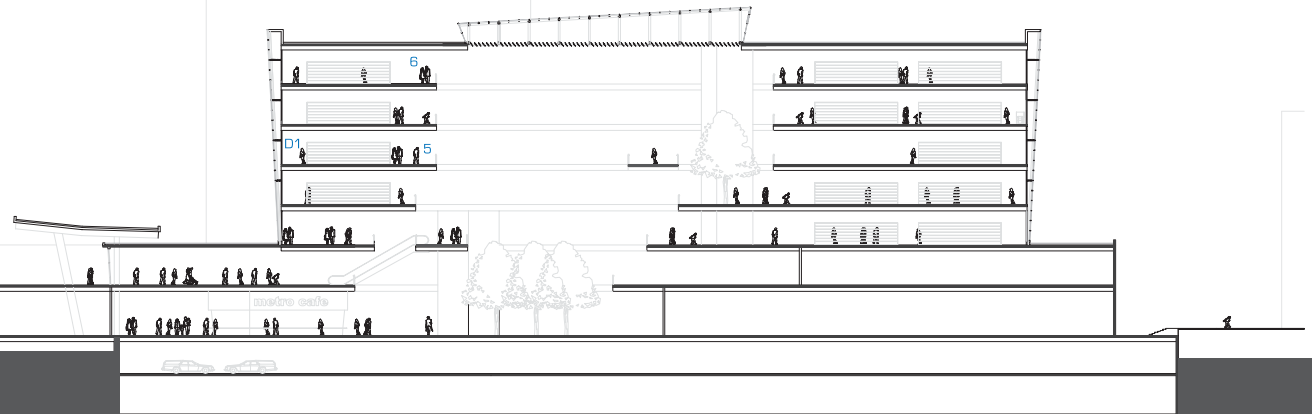
SUMMER- cool fresh air provide through lower levels
warm air moves up and directly out of building
WINTER- warm air used for heat recovery through
louvers at roof level. double skin provides
thermal barrier to outside elements

D1

section 1: 250



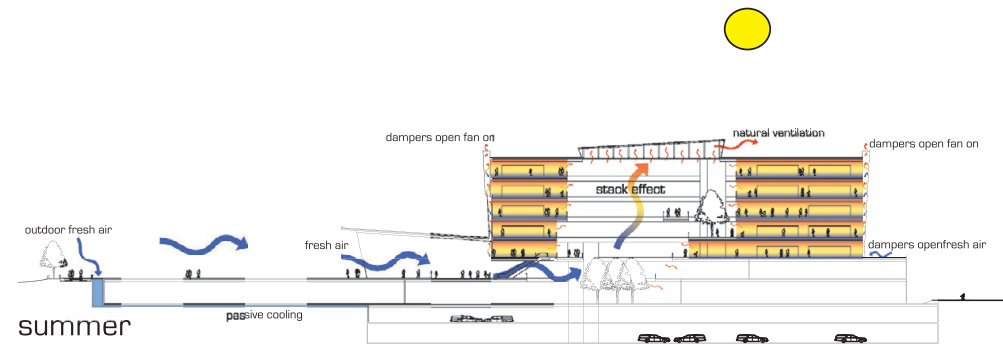
west - east section 1: 250



6

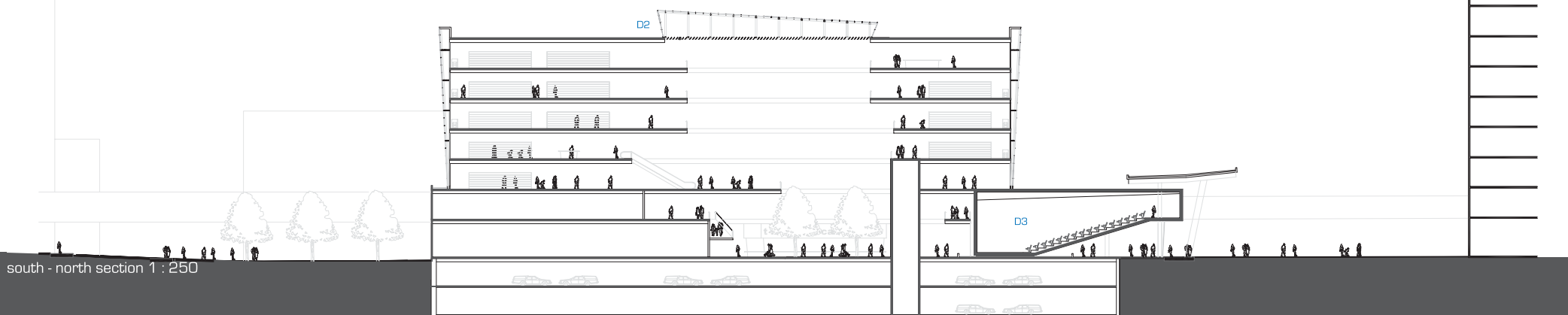
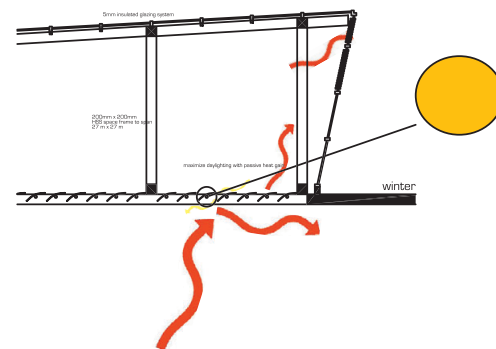
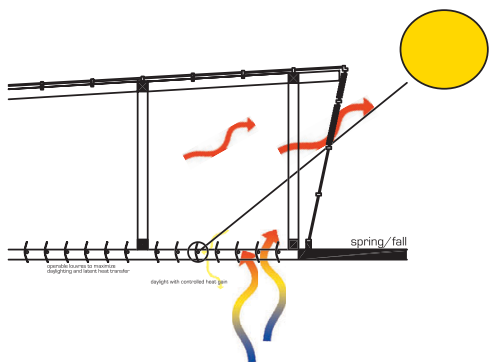


top of atrium - view of hub



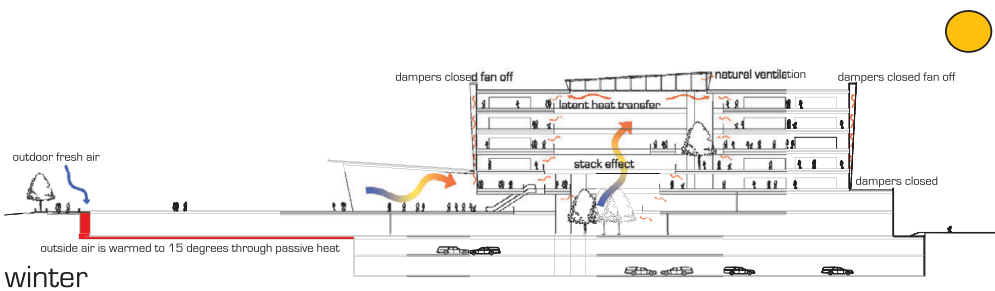
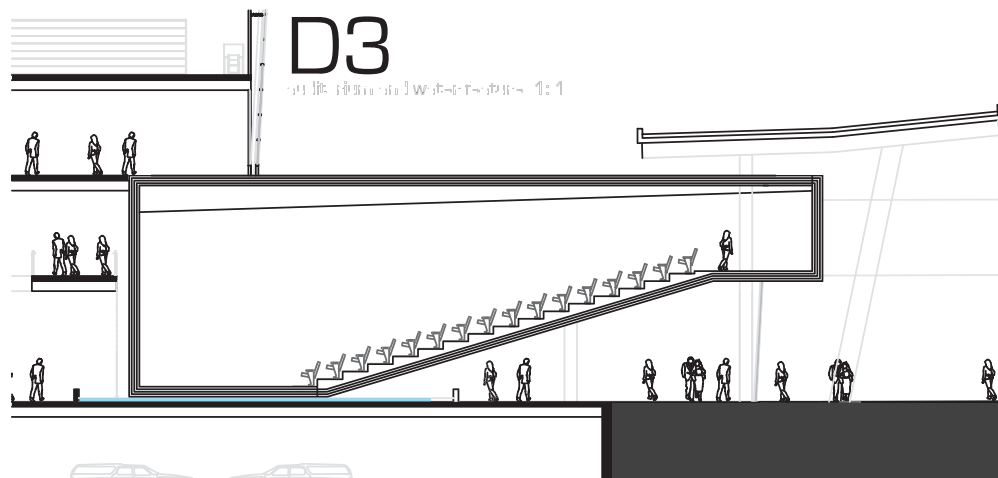
summer

1-5-11 1-6-2: K V=100-100 0, 1:5



D3

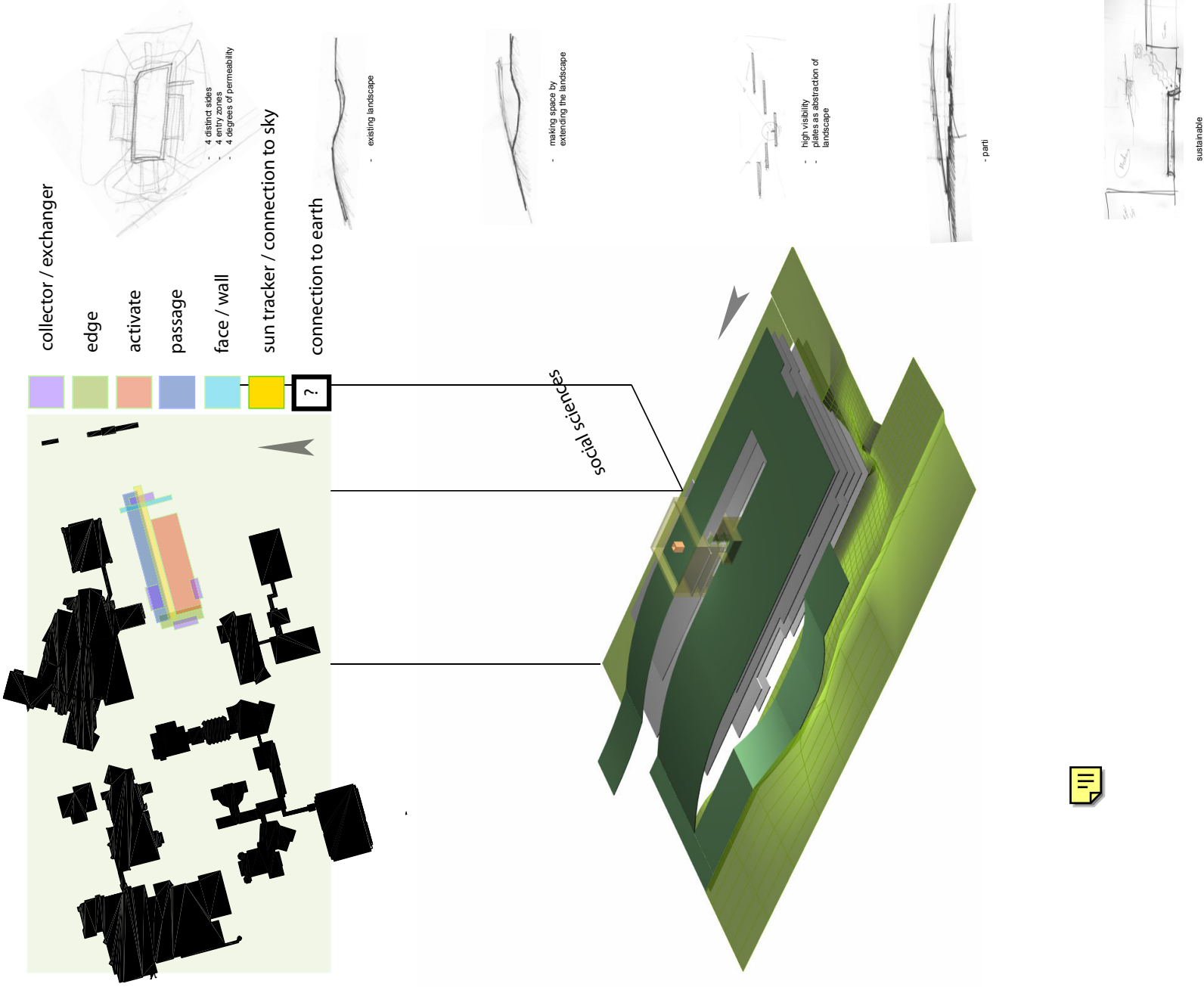
www.fishbase.org 1:1

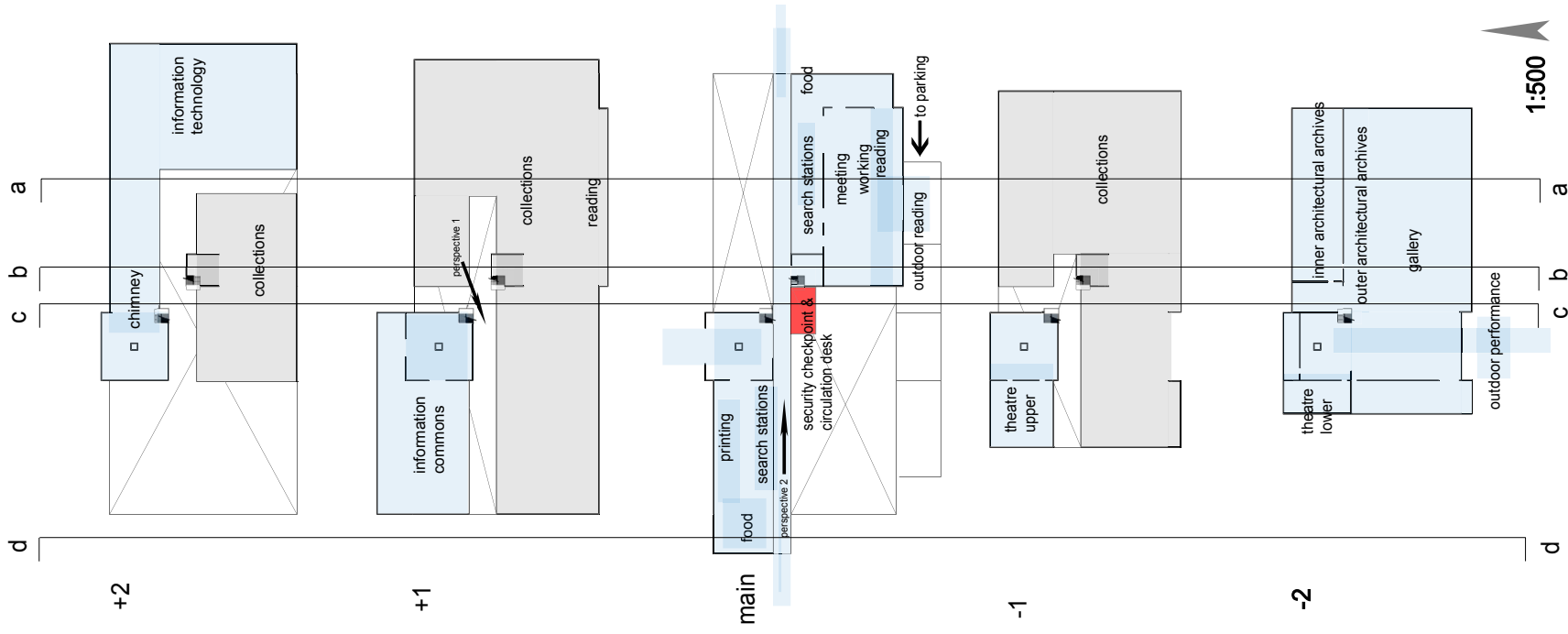
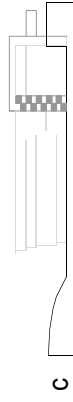
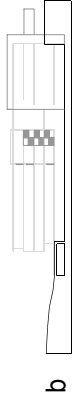
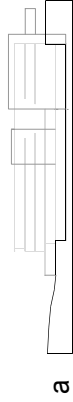
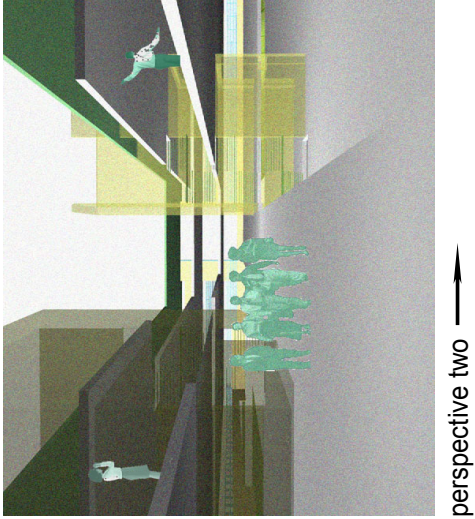
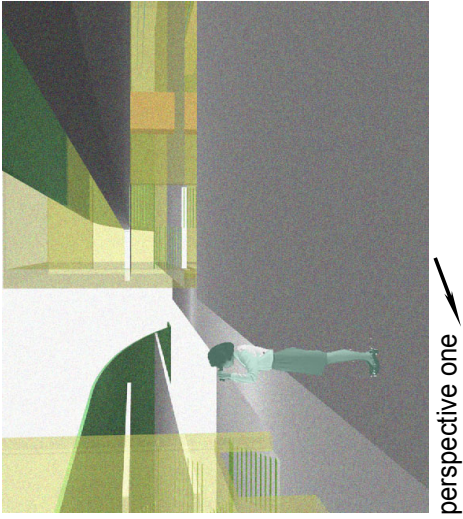


University of Calgary Information Commons

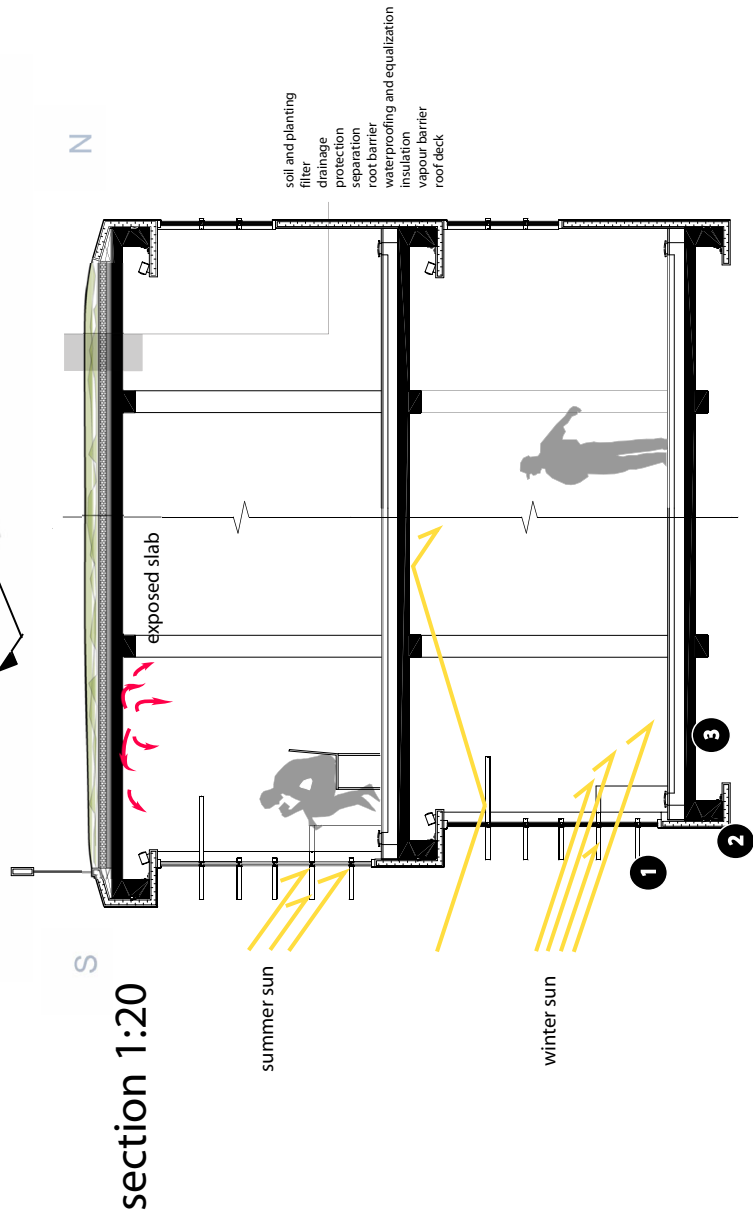
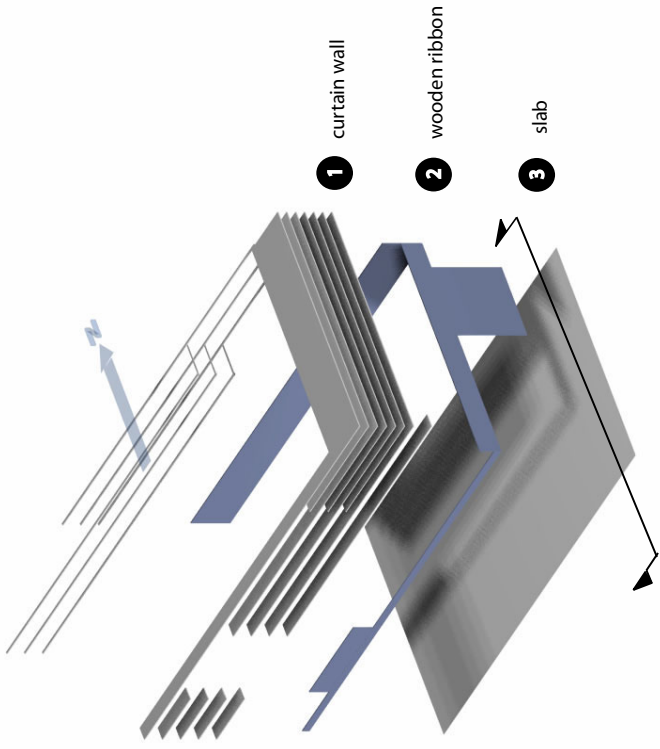
Sustainable Architecture Through Biological Principles

Sustainability emerges by nurturing symbiotic relationships between place and built form. A living cell does the same: it forms a boundary that actively exchanges proximal entities through varying degrees of permeability. In other words, a cell's operation and shape is moulded by what occurs at its surroundings. Therefore, by investigating the limits of enclosure - the edges, the earth, and the sky - architecture can occur as an iteration of biological process.

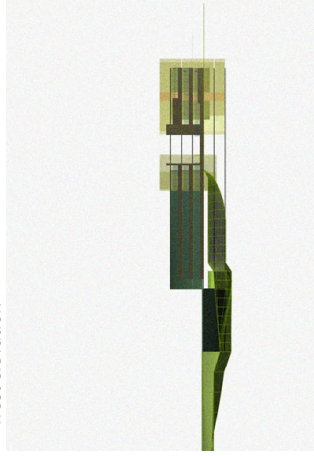




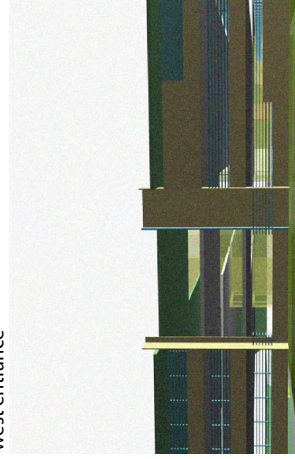
curtain wall system



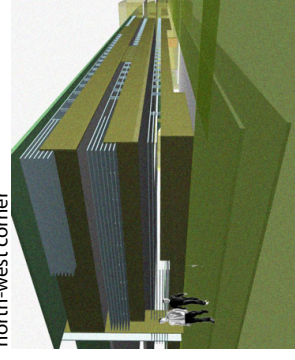
west elevation



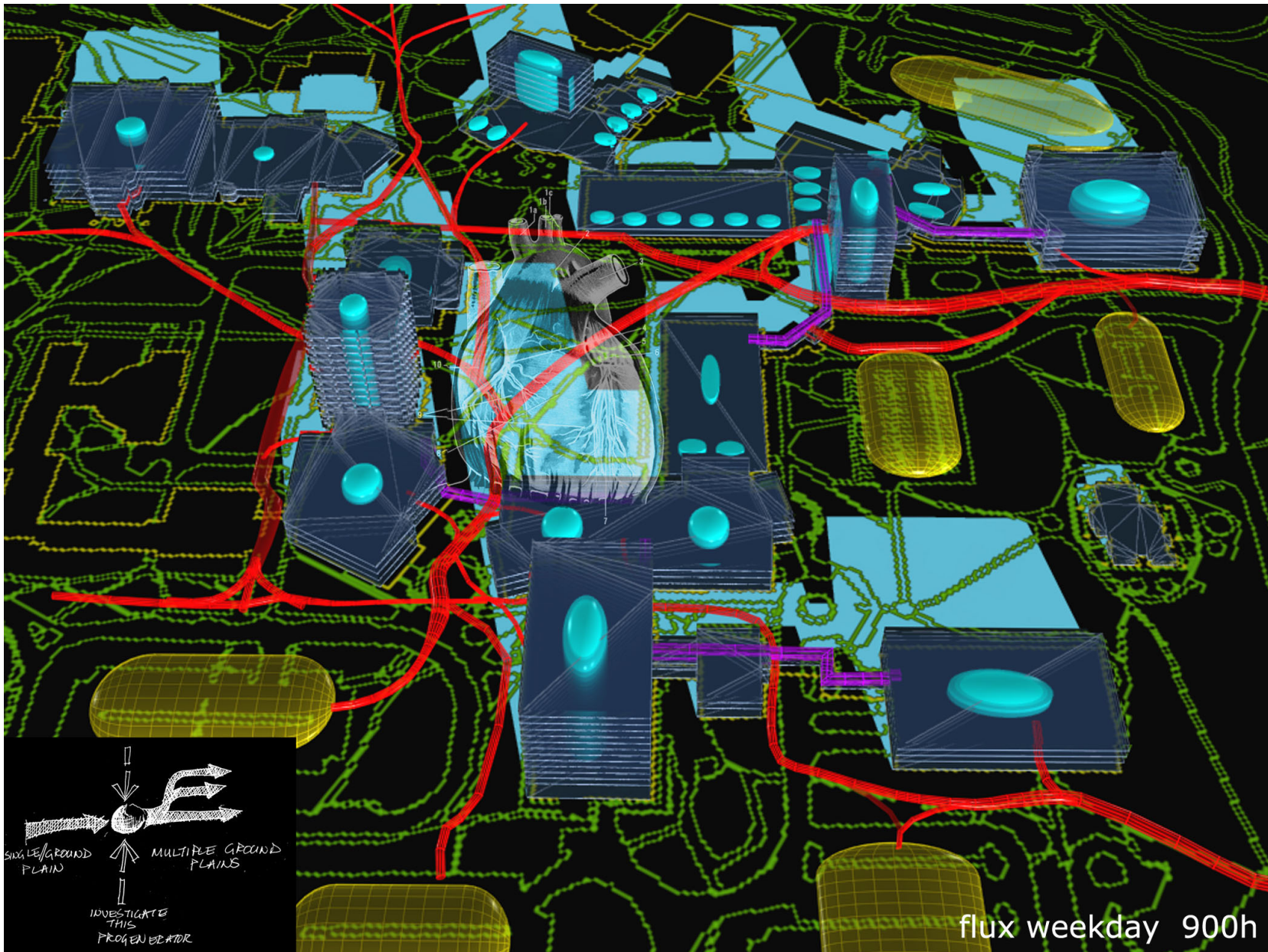
west entrance



north-west corner

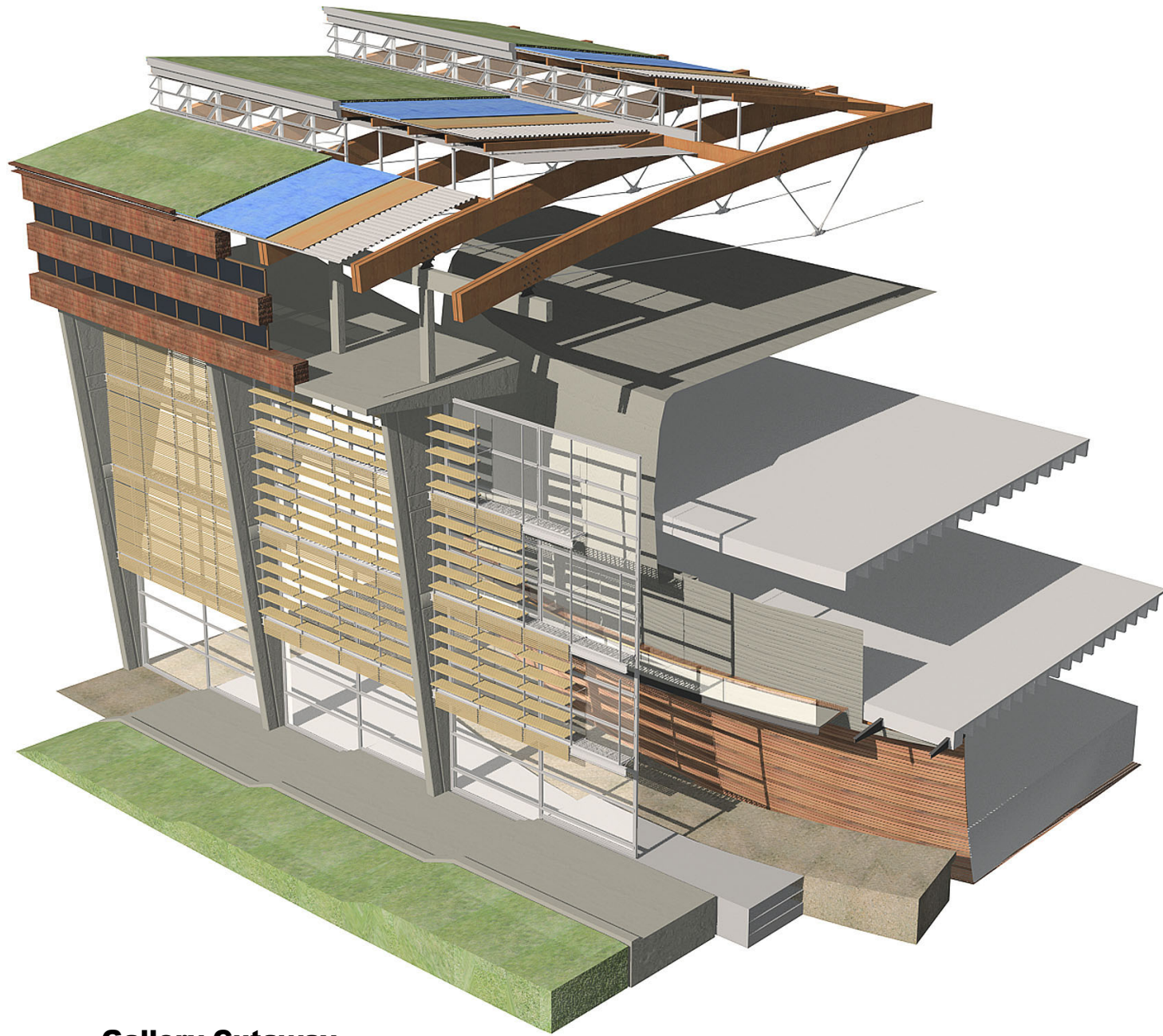




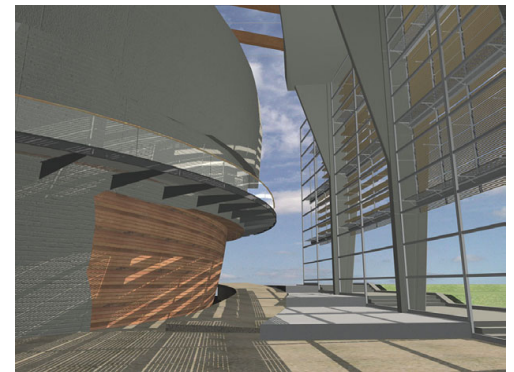
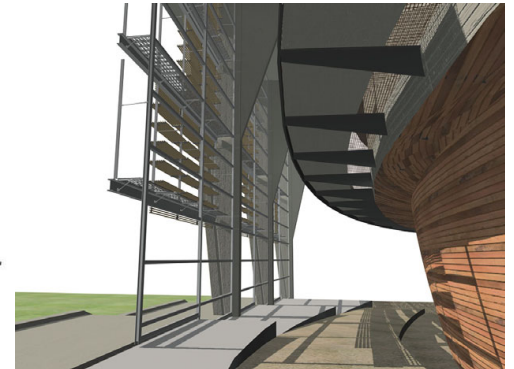
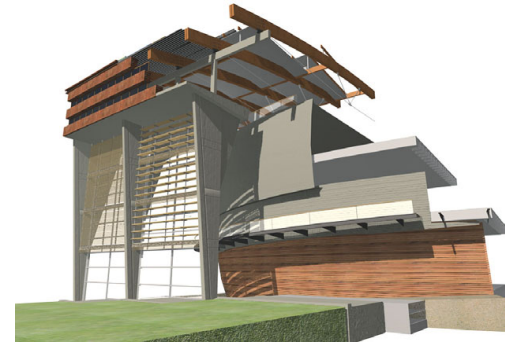


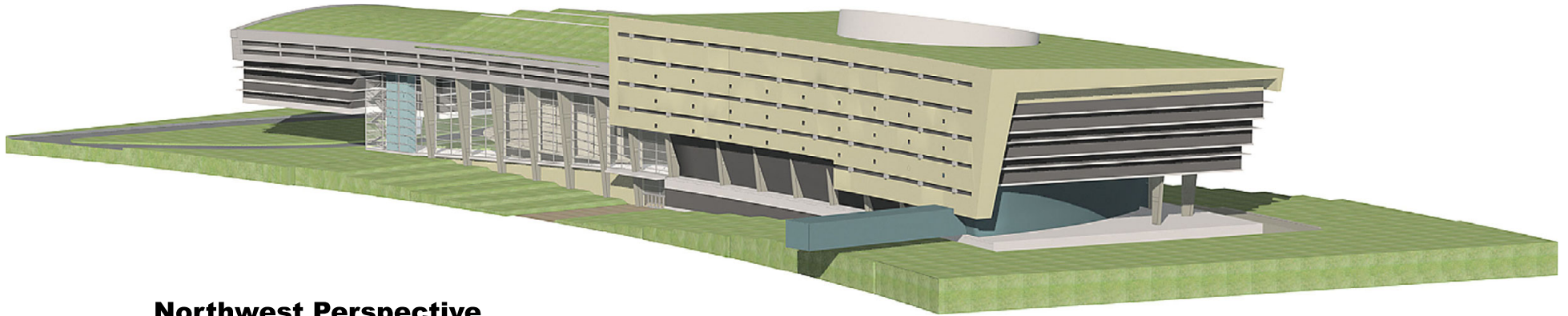
Conceptualization



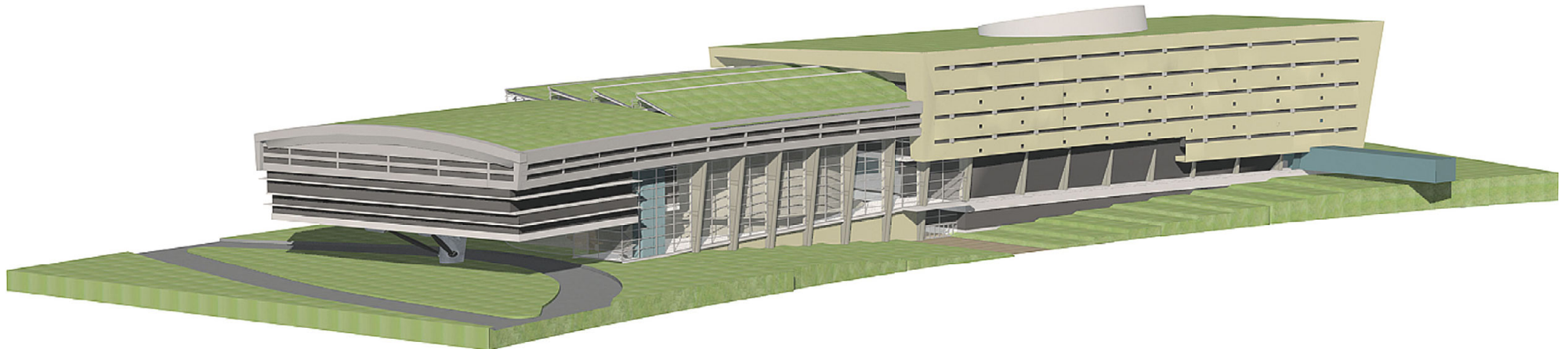


Gallery Cutaway

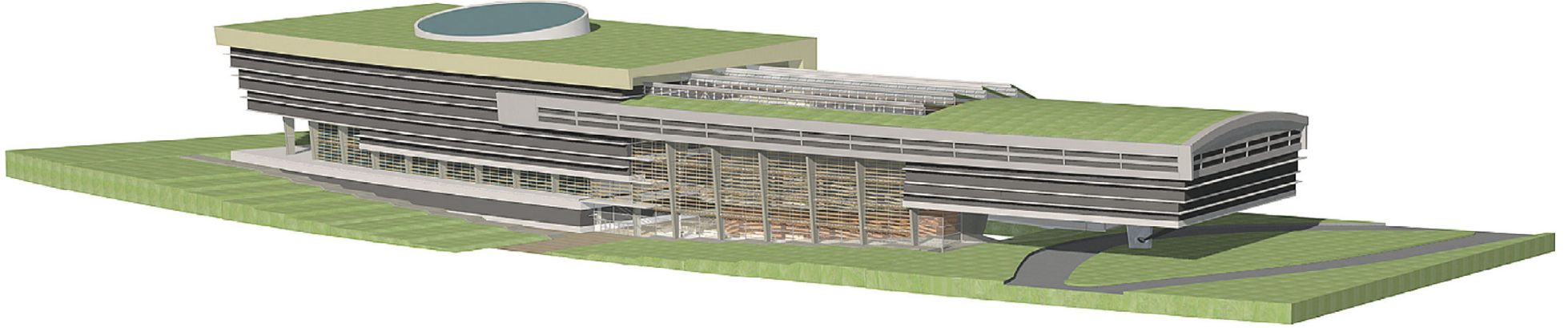




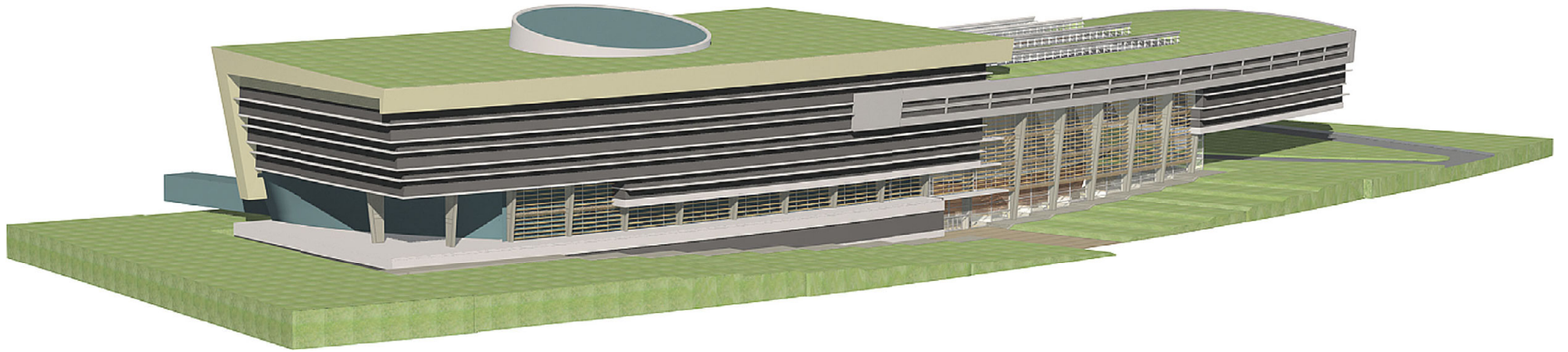
Northwest Perspective



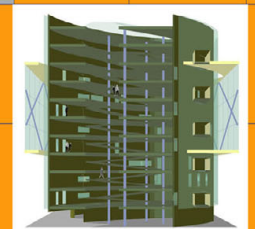
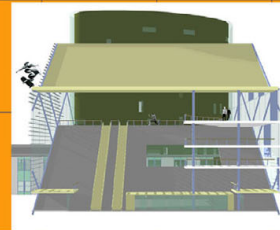
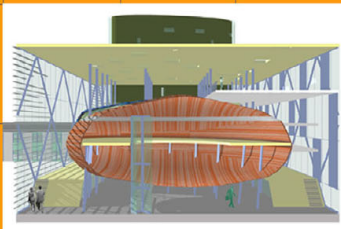
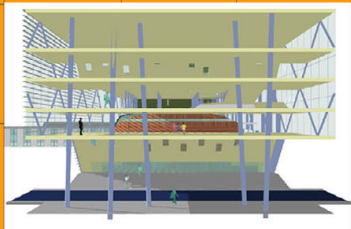
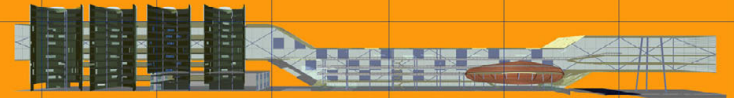
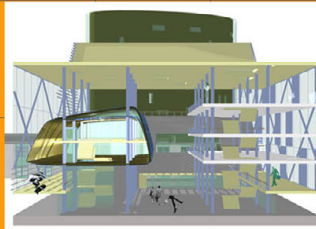
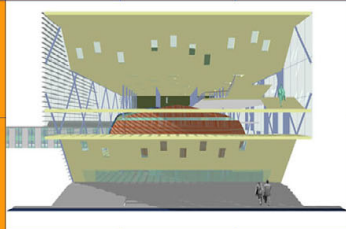
Northeast Perspective



Southeast Perspective



Southwest Perspective

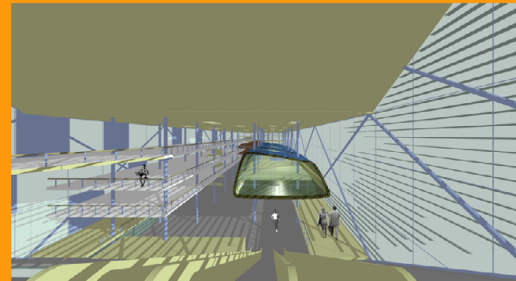
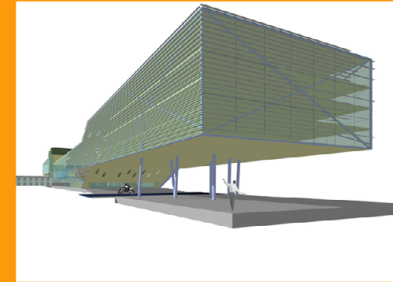
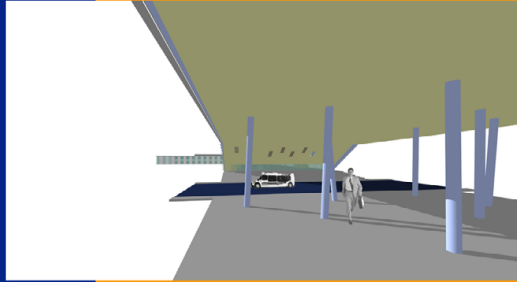


SOUTH ELEVATION

EAST ELEVATION

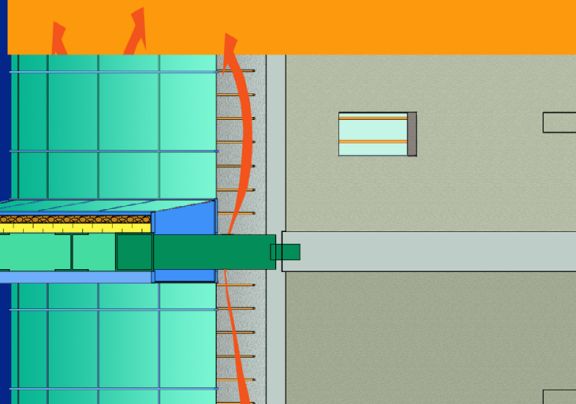
NORTH ELEVATION

WEST ELEVATION



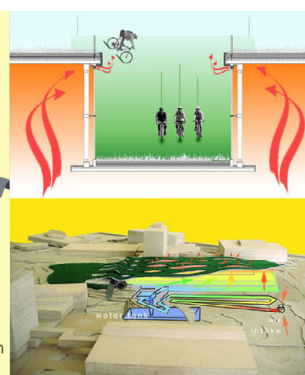
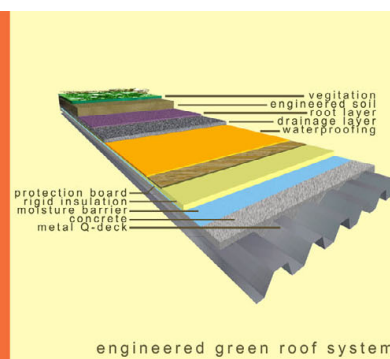
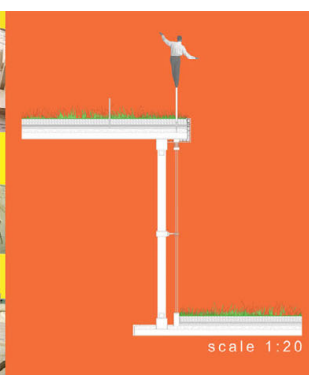
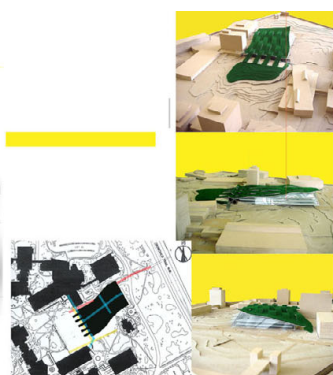
HIGH PERFORMANCE
CURTAIN WALL AND
HEATING SYSTEM

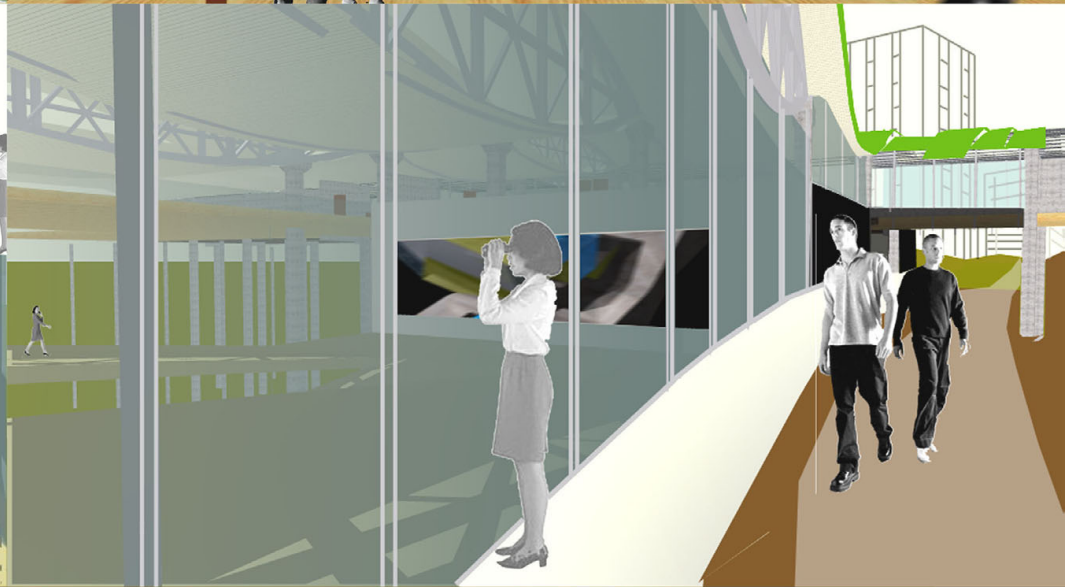
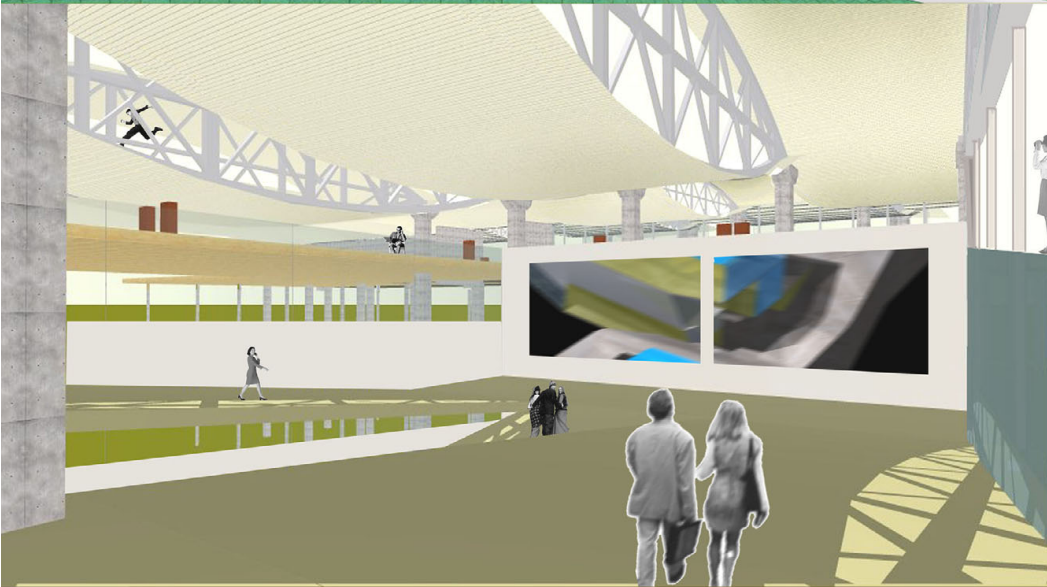
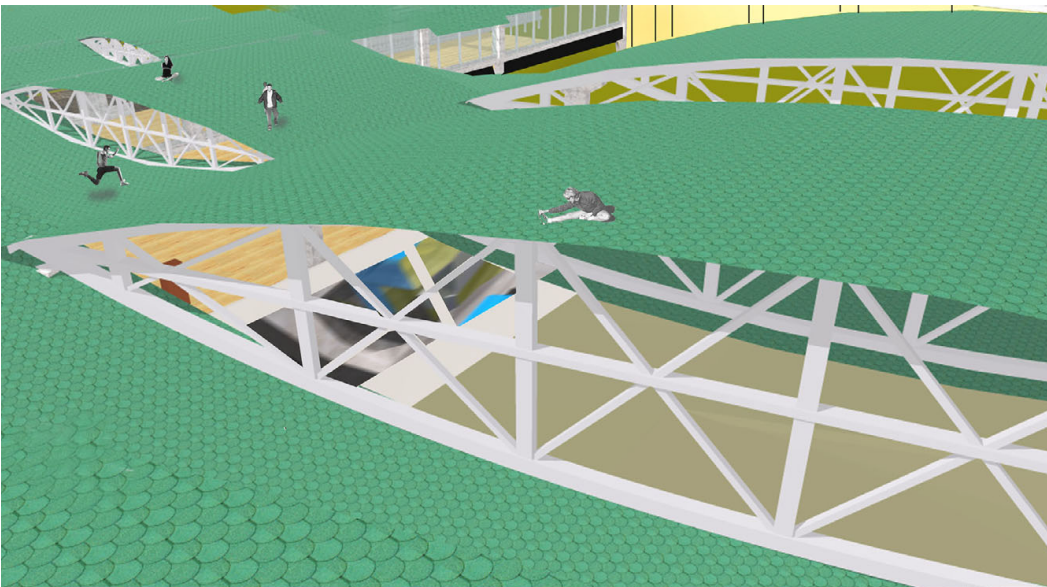
DETAIL 1:20

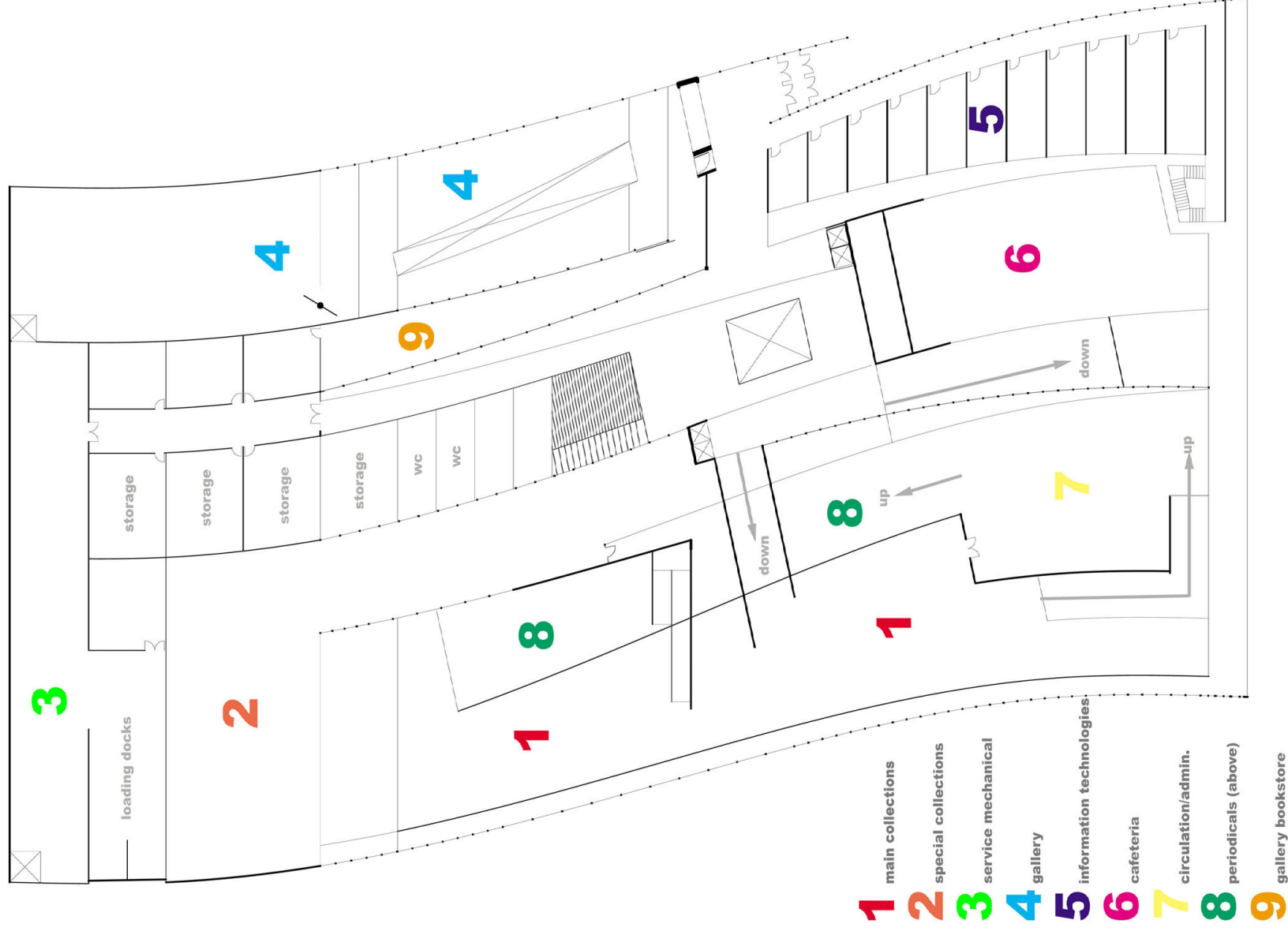


STACK EFFECT VENTILATION AND THERMAL MASS ARE THE KEY ELEMENTS IN THE ADJACENT DETAIL. A HIGH PERFORMANCE CURTAIN WALL SYSTEM HEATS BOTH THE STRUCTURAL CONCRETE AND COPPER TUBING RUNNING AROUND THE BUILDING. THIS ALLOWS FOR AMBIENT HEATING, COOLING, AND VENTILATION OF THE LIBRARY STACKS WITH VERY LITTLE OTHER ENERGY THAN THAT PROVIDED BY THE SUN.

THE TECTONIC STRATEGY IS ONE THAT ALLOWS THE LIBRARY STACKS TO REMAIN AUTONOMOUS FROM THE MAIN MASSING OF THE LIBRARY.

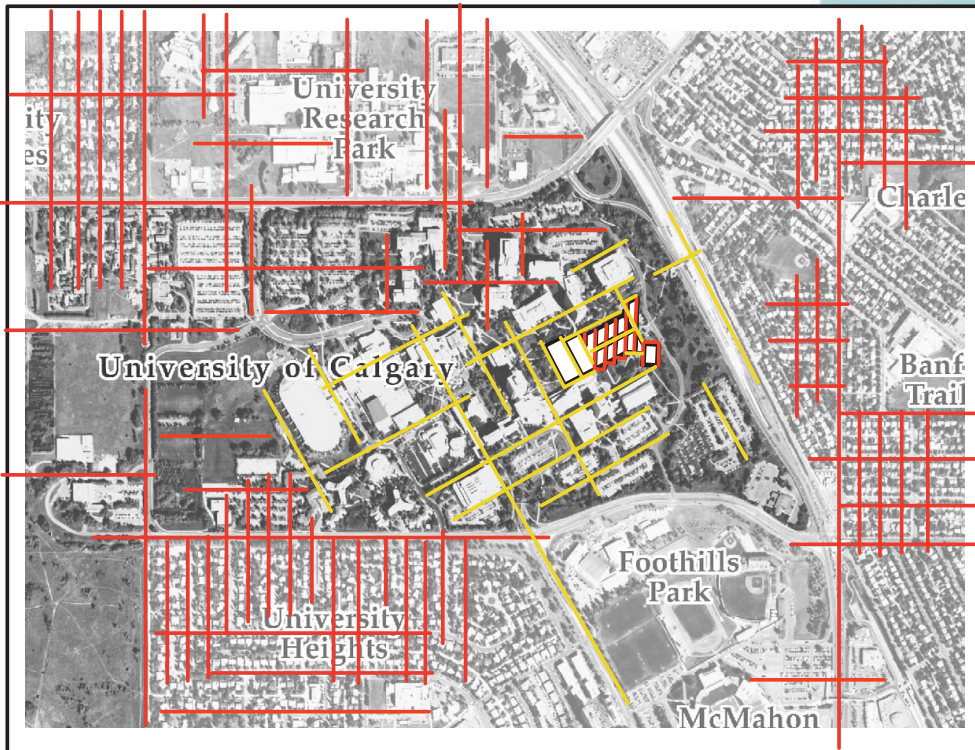






information commons level main

scale 1:500



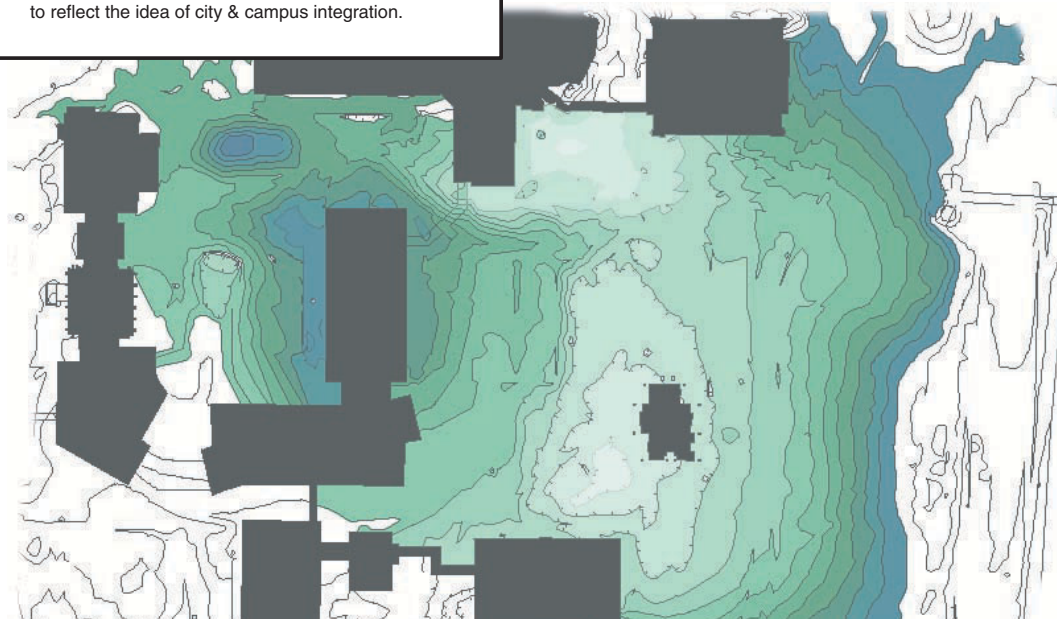
- North/ South City Grid
- University Campus Grid

The new library building encompasses both grid systems to reflect the idea of city & campus integration.



The "University Fortress"

The arrangement of campus buildings creates a fortress-like condition that gives the University a sense of seclusion and separation from the city.



Site Topography



University of Calgary INFORMATION COMMONS

SECTION A

MAIN FLOOR

1:1000

BASEMENT

Natural Lighting Through
Atrium Spaces & Translucent
Drop-Ceilings

PROGRAM

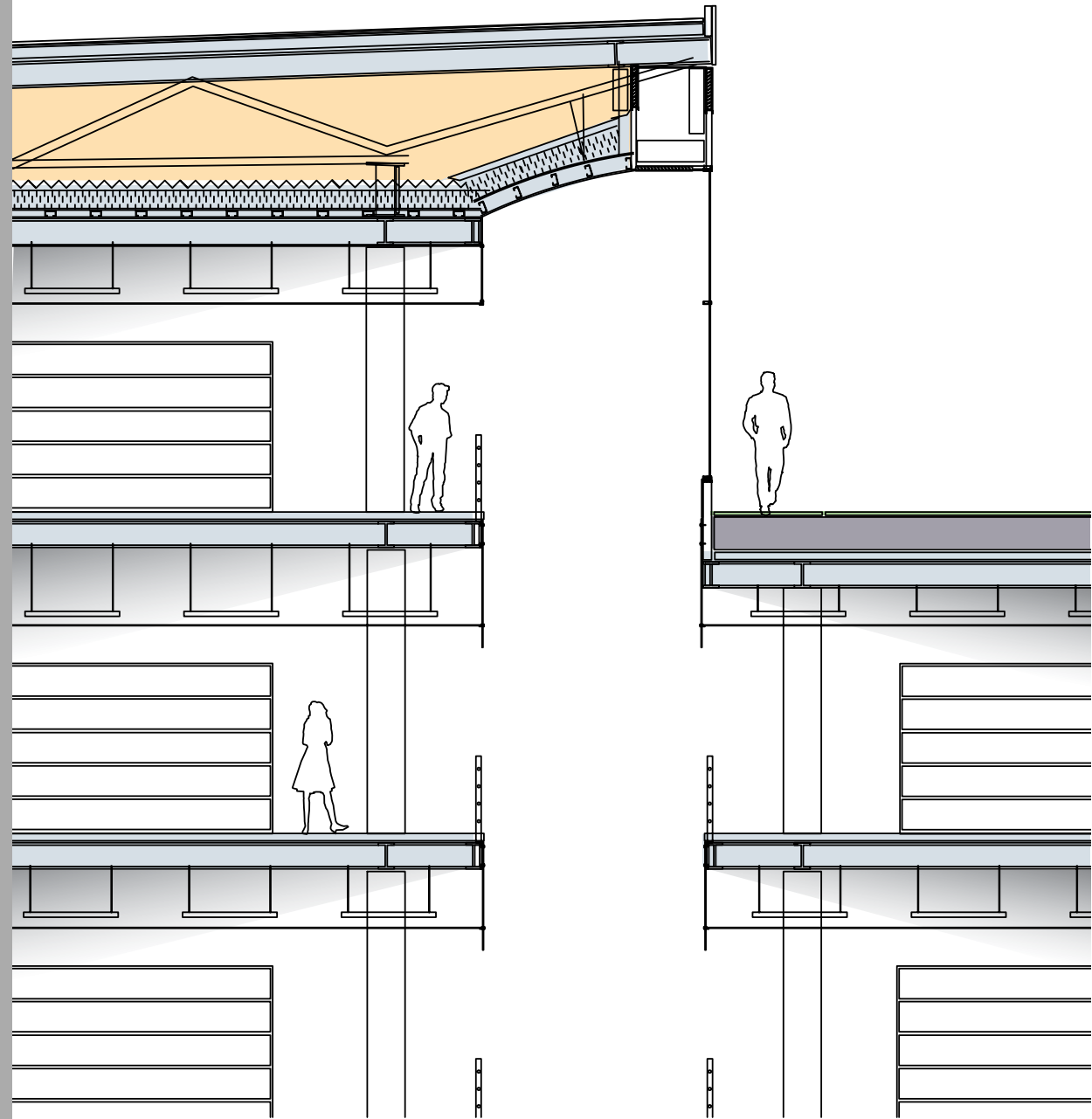
- 1 Auditorium
- 2 Learning Commons
(Videoconference / Multimedia
Classrooms & High Perf.
Computer Labs)
- 3 Student Work Areas
- 4 Meeting & Study Rooms
- 5 Reading Room
- 6 Main Copier / Printer Area
- 7 Food Service (Cafeteria & Prep)
- 8 Public Lounge Areas, WC
- 9 Circulation Decks
- 10 Help Desks
- 11 Search Stations
- 12 Main Collections
- 13 Government Docs
- 14 Newspapers / Periodicals
- 15 Reference / Indexes
- 16 Canadian Archives
- 17 Gallery (Staff, Prep &
Exhibition)
- 18 Special Collections
- 19 Library Administration
- 20 Information Technology Dept.
- 21 Parking

Stack Effect
Through Atrium

5TH FLOOR

4TH FLOOR

3RD FLOOR

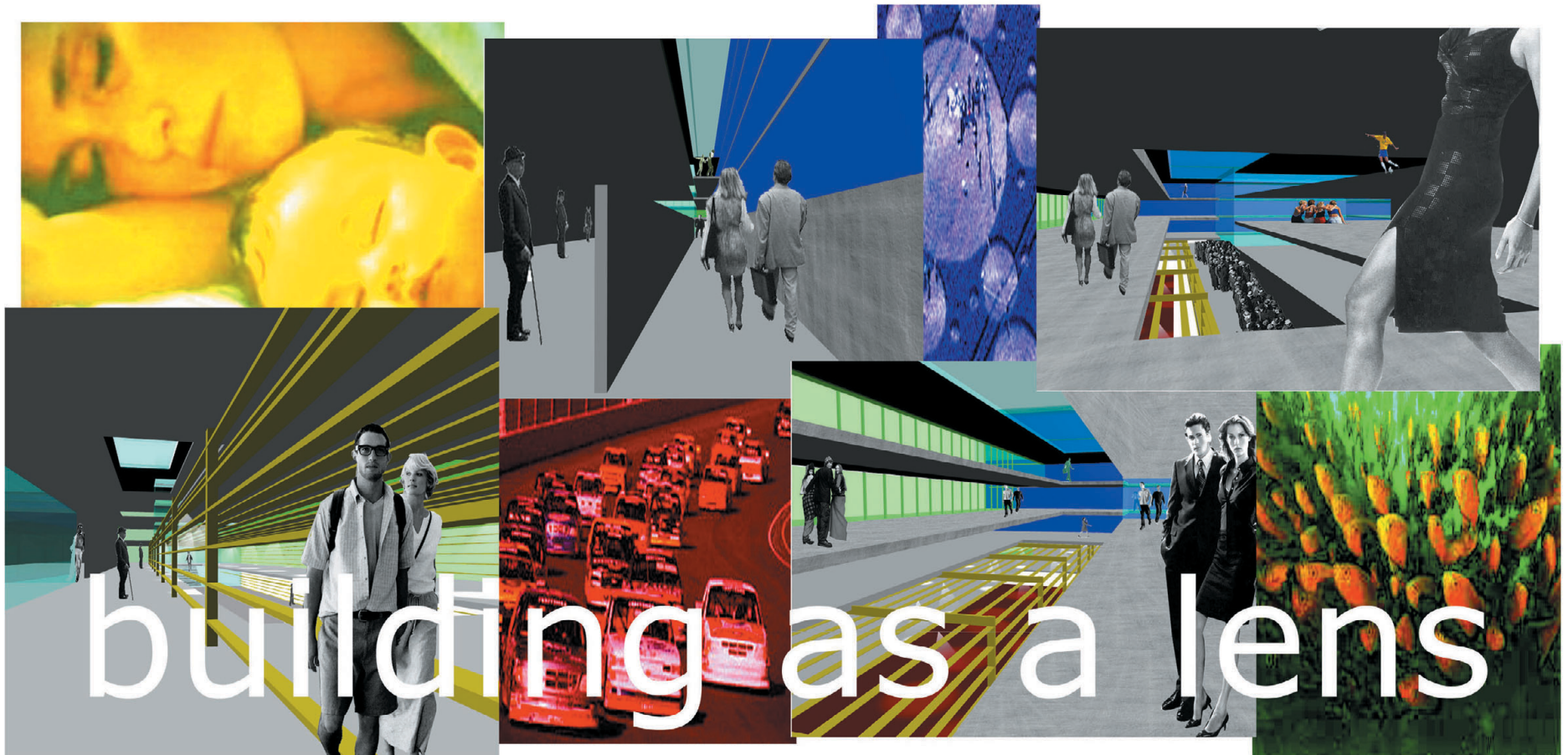
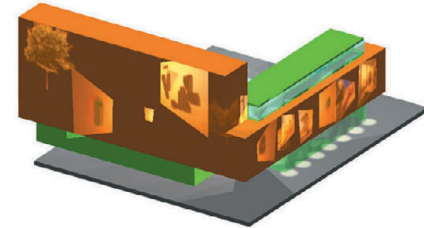
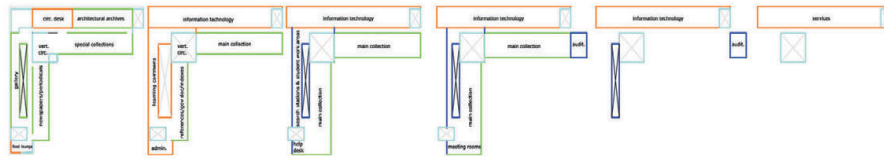


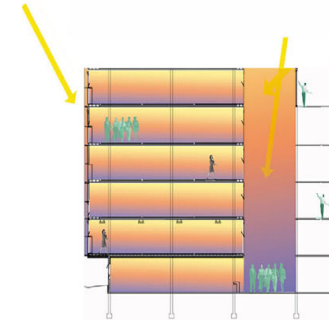
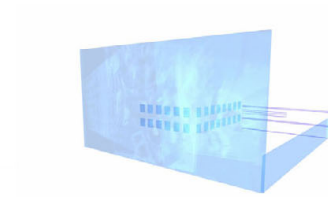
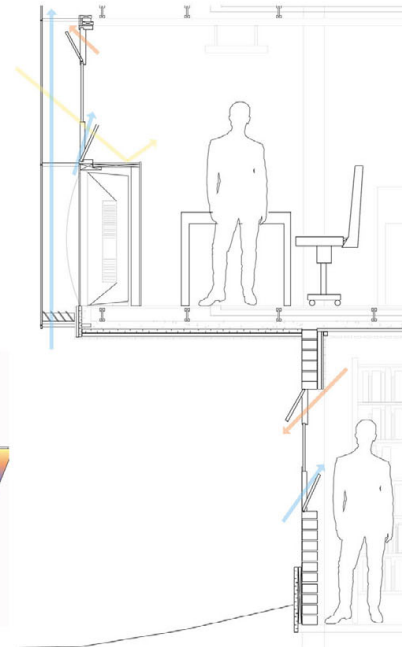
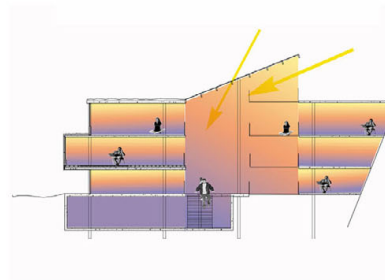
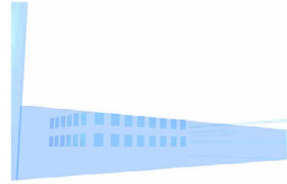
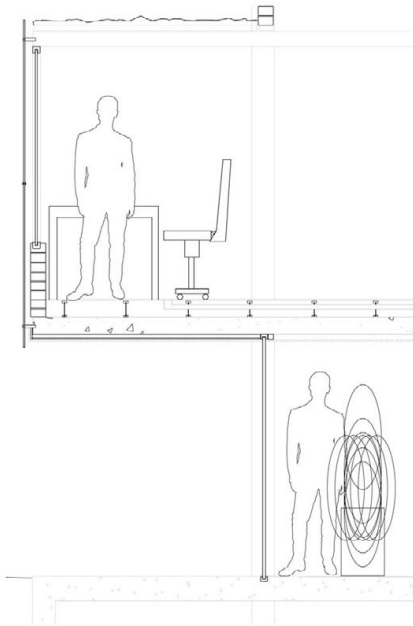
Detail Section Through Passive Heating Roof and Atrium

1:20



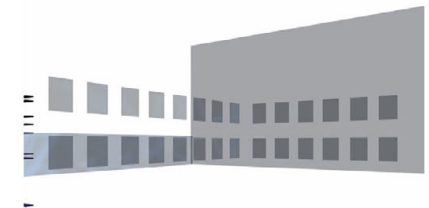
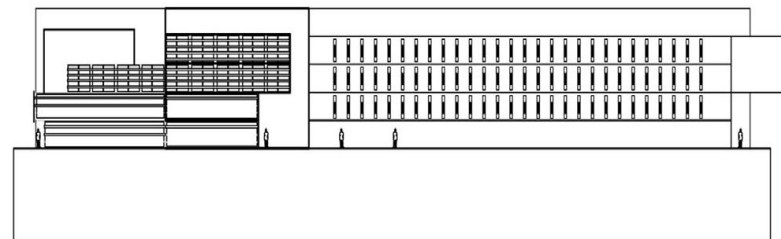
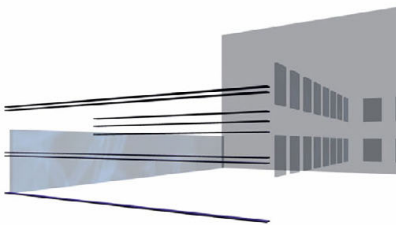
the university of calgary information commons





wall as screen

wall as projector



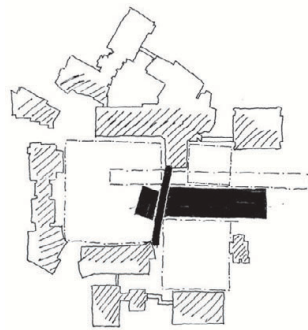
wall as filter



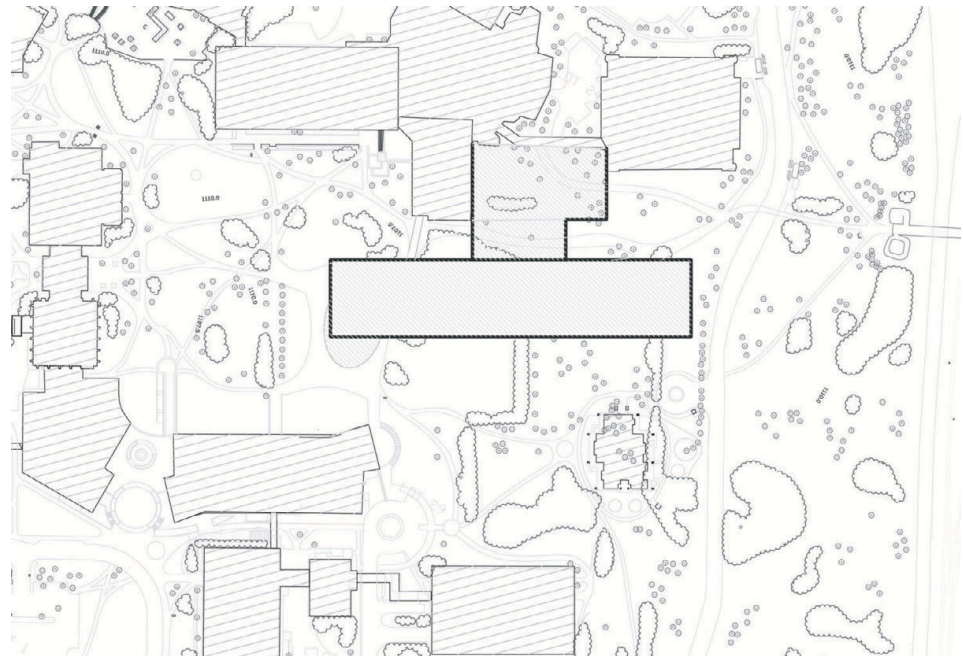
Monastic - Frenetic
University of Calgary
Calgary, AB



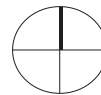
Site Analysis



Initial Siting Strategy

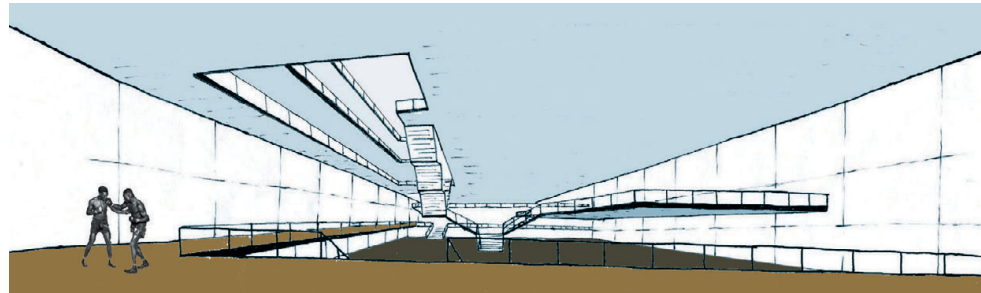


Final Footprint
1/1500

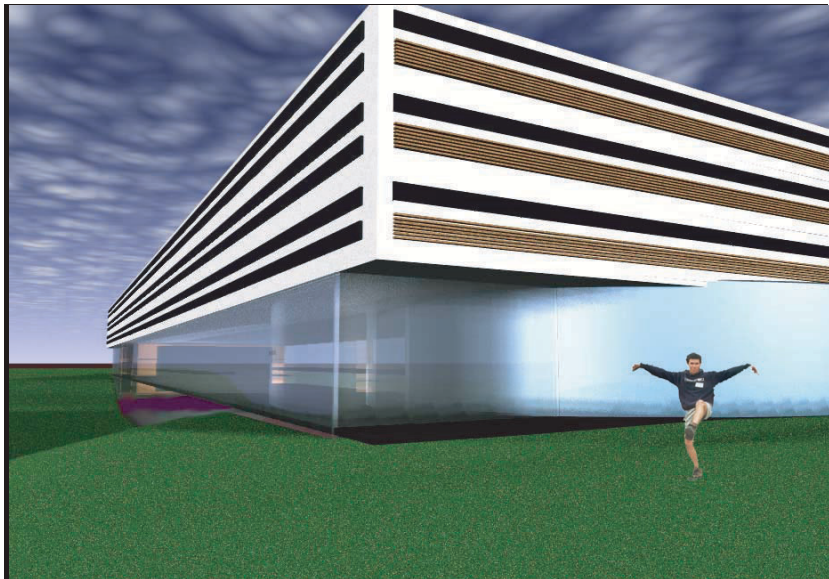


Rob Copeland
Sustainability Studio
April, 2002

Monastic - Frenetic
University of Calgary
Calgary, AB



view into the Commons from lobby area

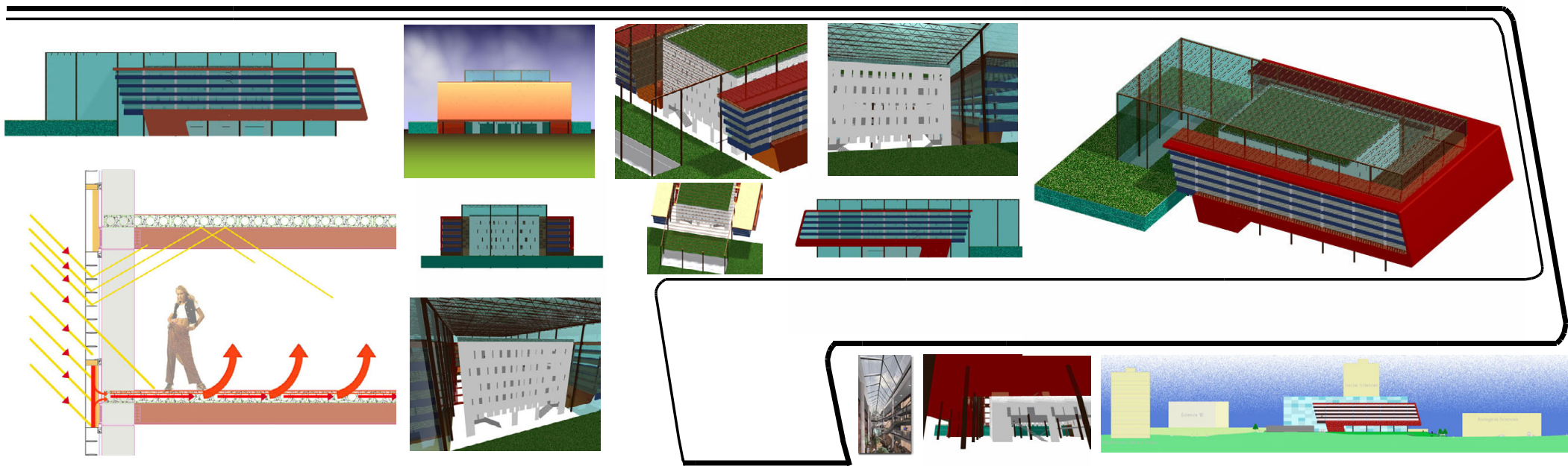
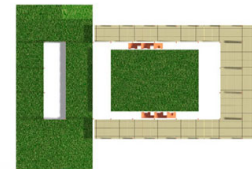
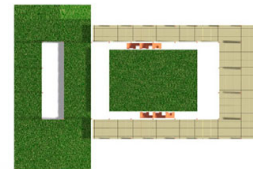
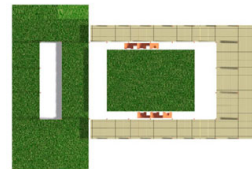
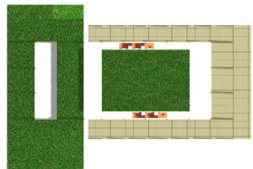
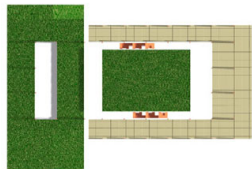
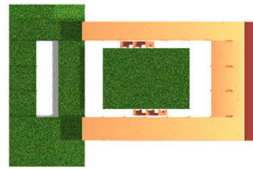
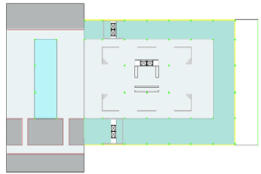


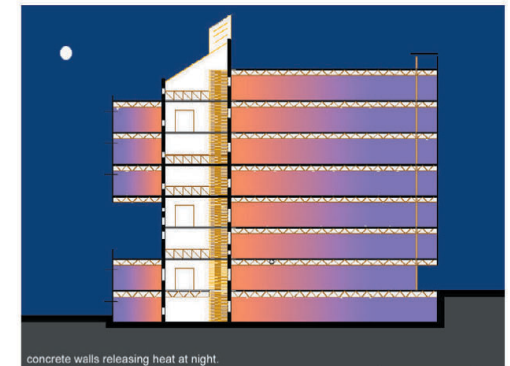
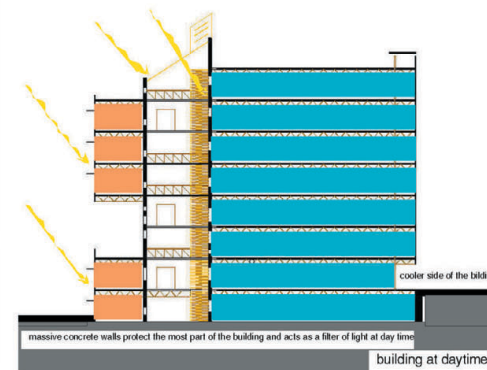
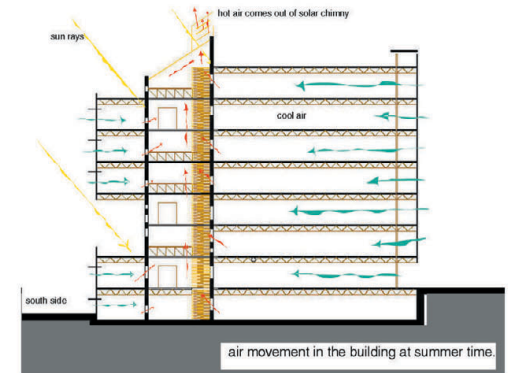
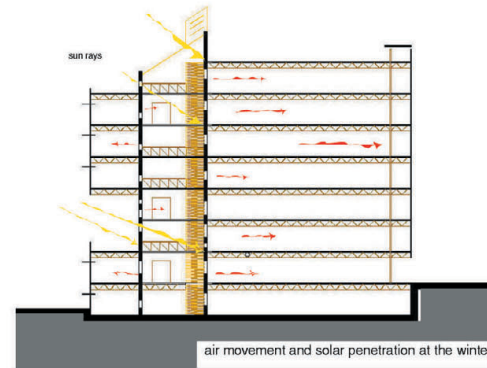
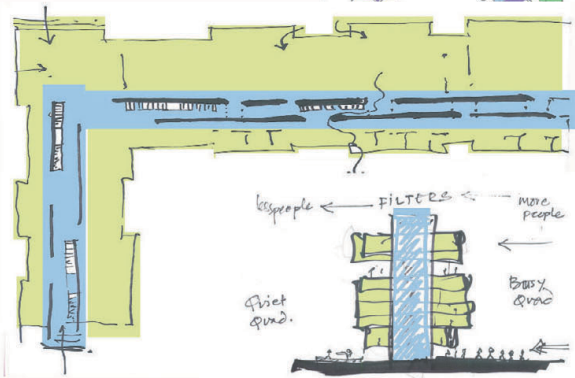
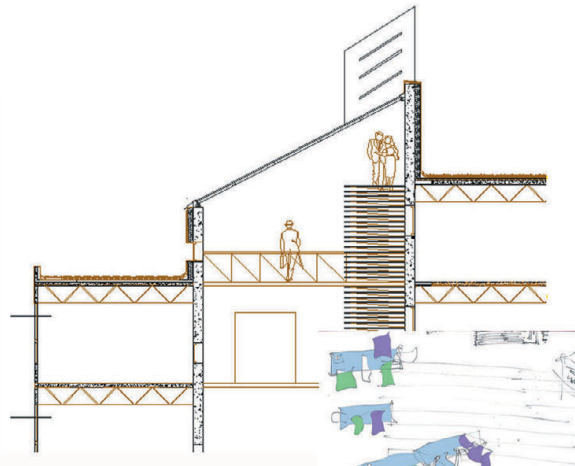
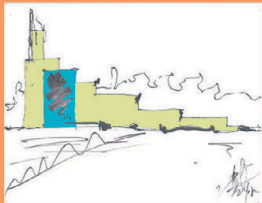
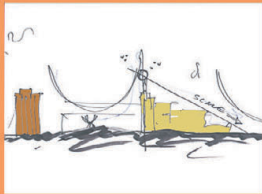
view from SE corner



view from NW corner

Rob Copeland
Sustainability Studio
April, 2002

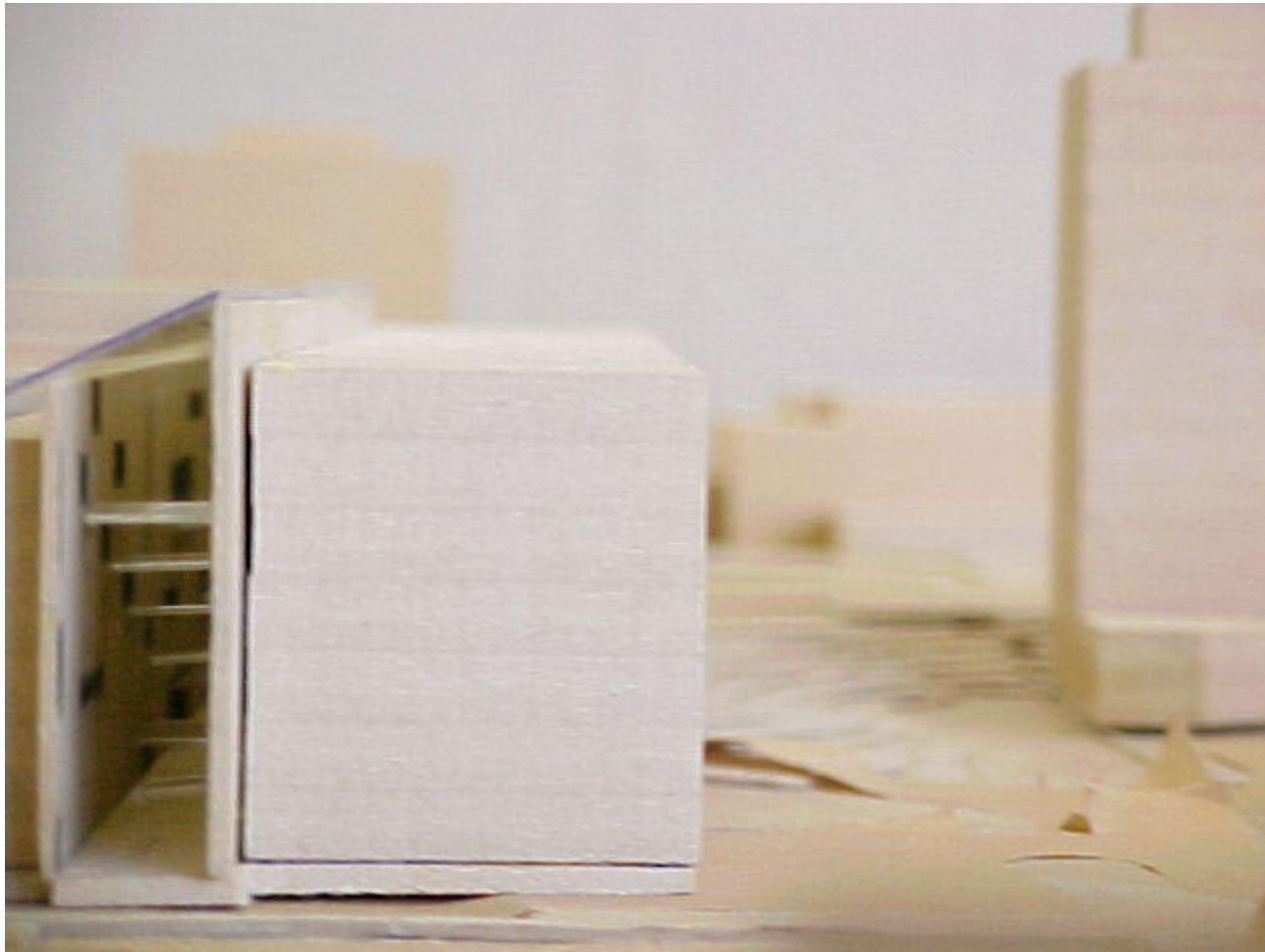


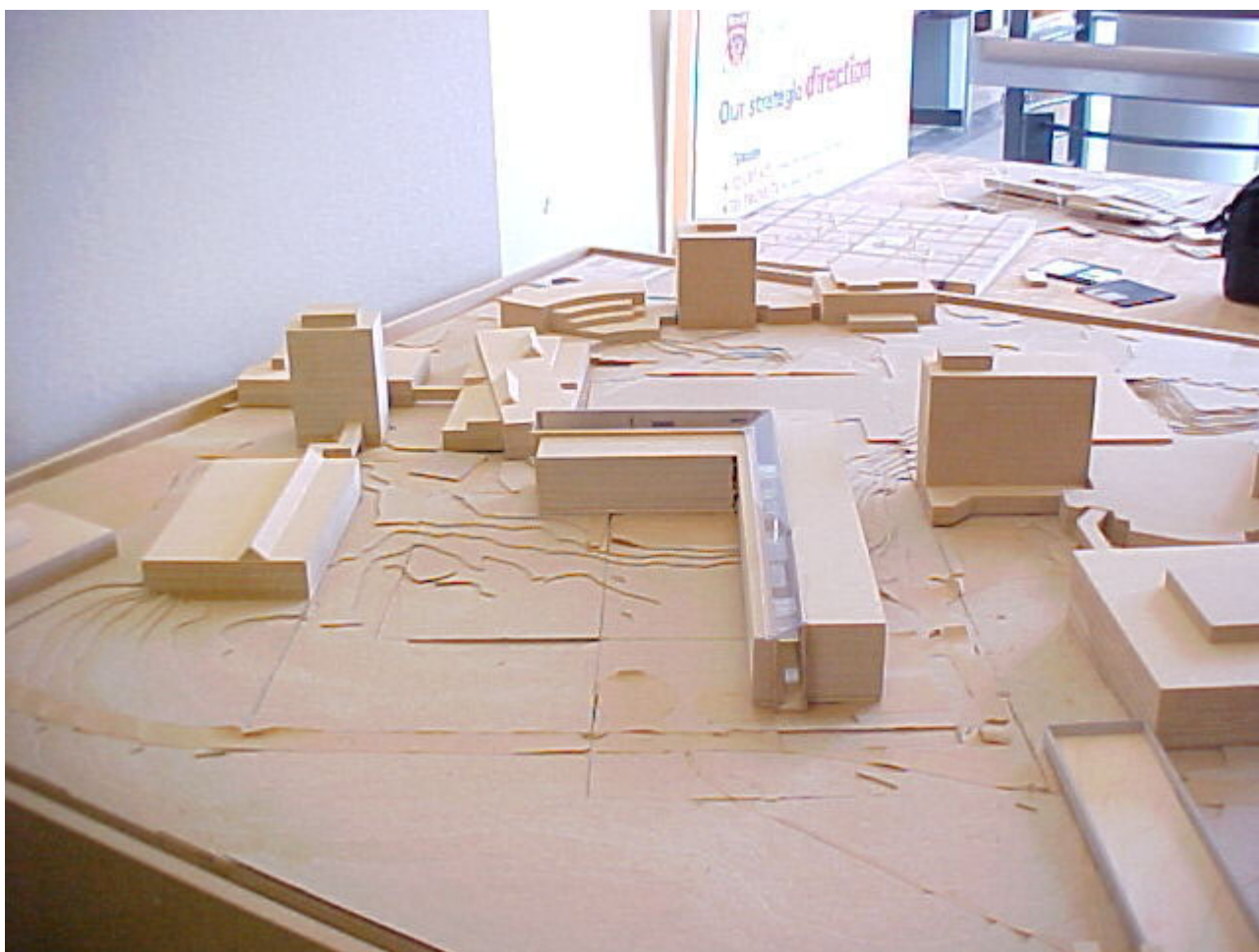


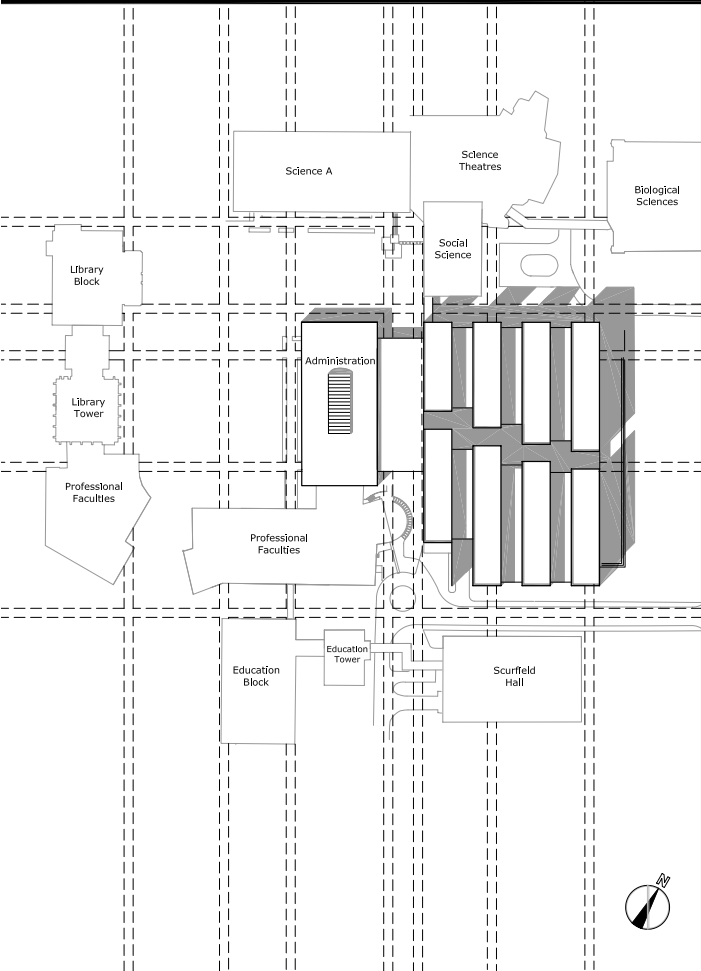
Learning commons for university of calgary

chitrang shah
04/19/2002
terrace detail, conceptual sketch & building in different times of year

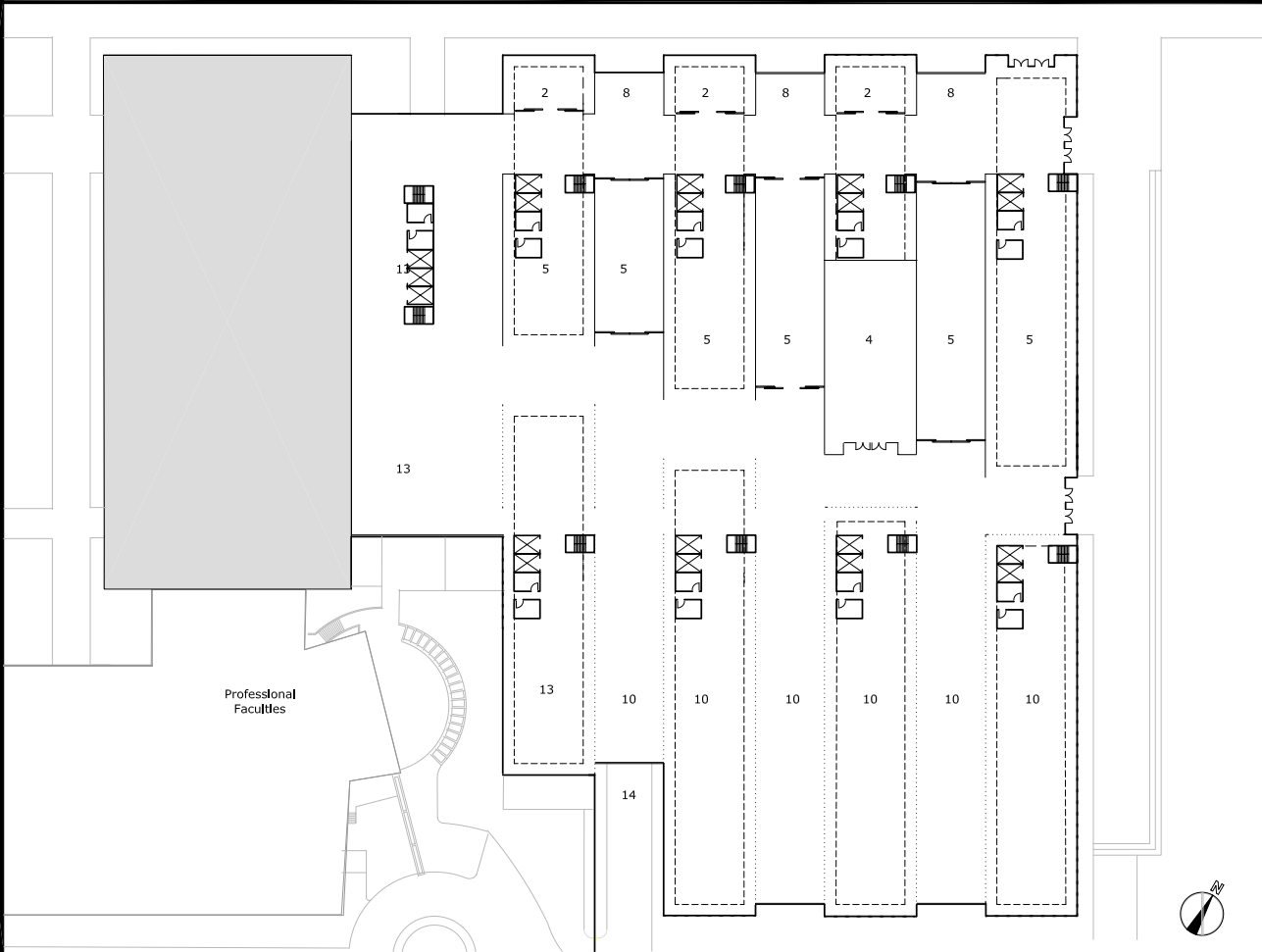








Site Plan
Scale = 1:1000



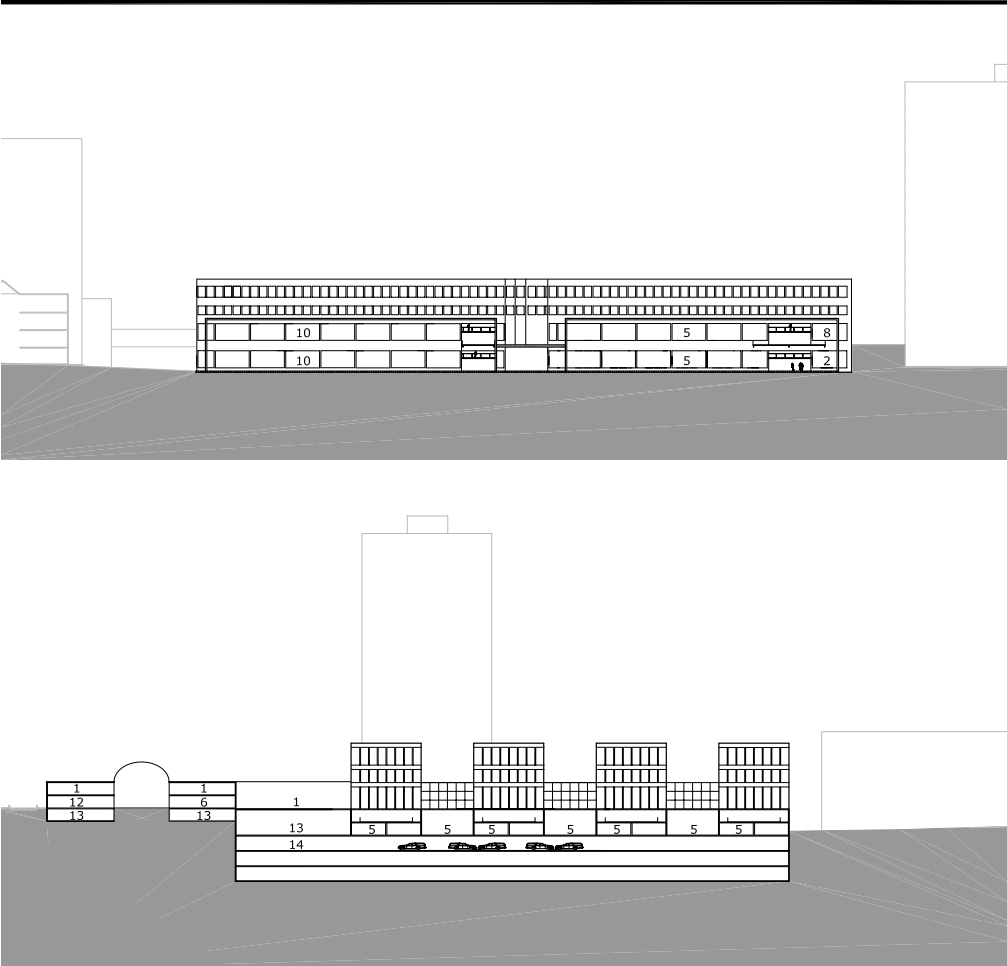
First Floor
Scale = 1:300

Jacky Durrie

Legend

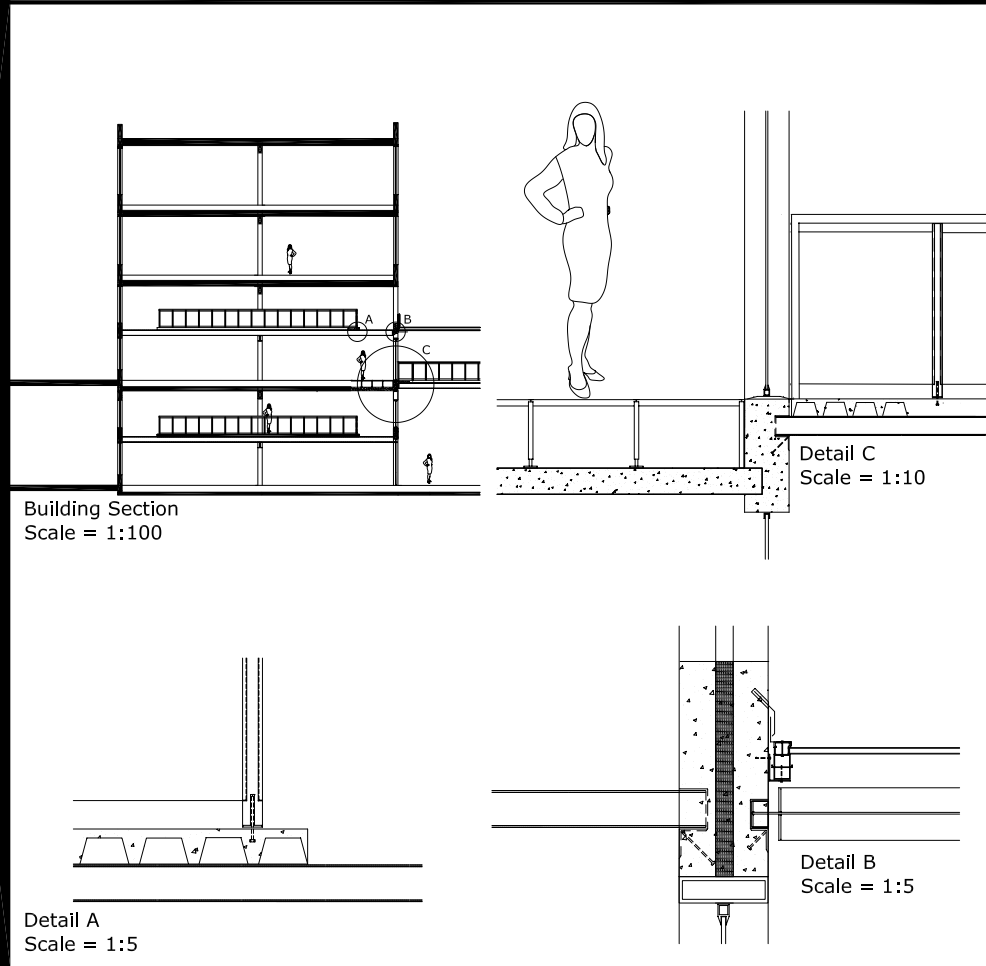
- 1. Circulation Desks and Administration
- 2. Meeting and Study Rooms
- 3. Main Reading Room
- 4. Auditorium
- 5. Mediated Collections and Gallery
- 6. Reference and Periodicals
- 7. Copy and Print
- 8. Student Work Areas
- 9. Learning Commons
- 10. Main Stacks
- 11. Information Technology Department
- 12. Food Services
- 13. Mechanical and Service Area
- 14. Underground Parking





N - S Section through Atrium
Scale = 1:400
Top

E-W Section through Courtyard
Scale = 1:400
Bottom



Building Section
Scale = 1:100

Detail C
Scale = 1:10

Detail A
Scale = 1:5

Detail B
Scale = 1:5

Library Section Details

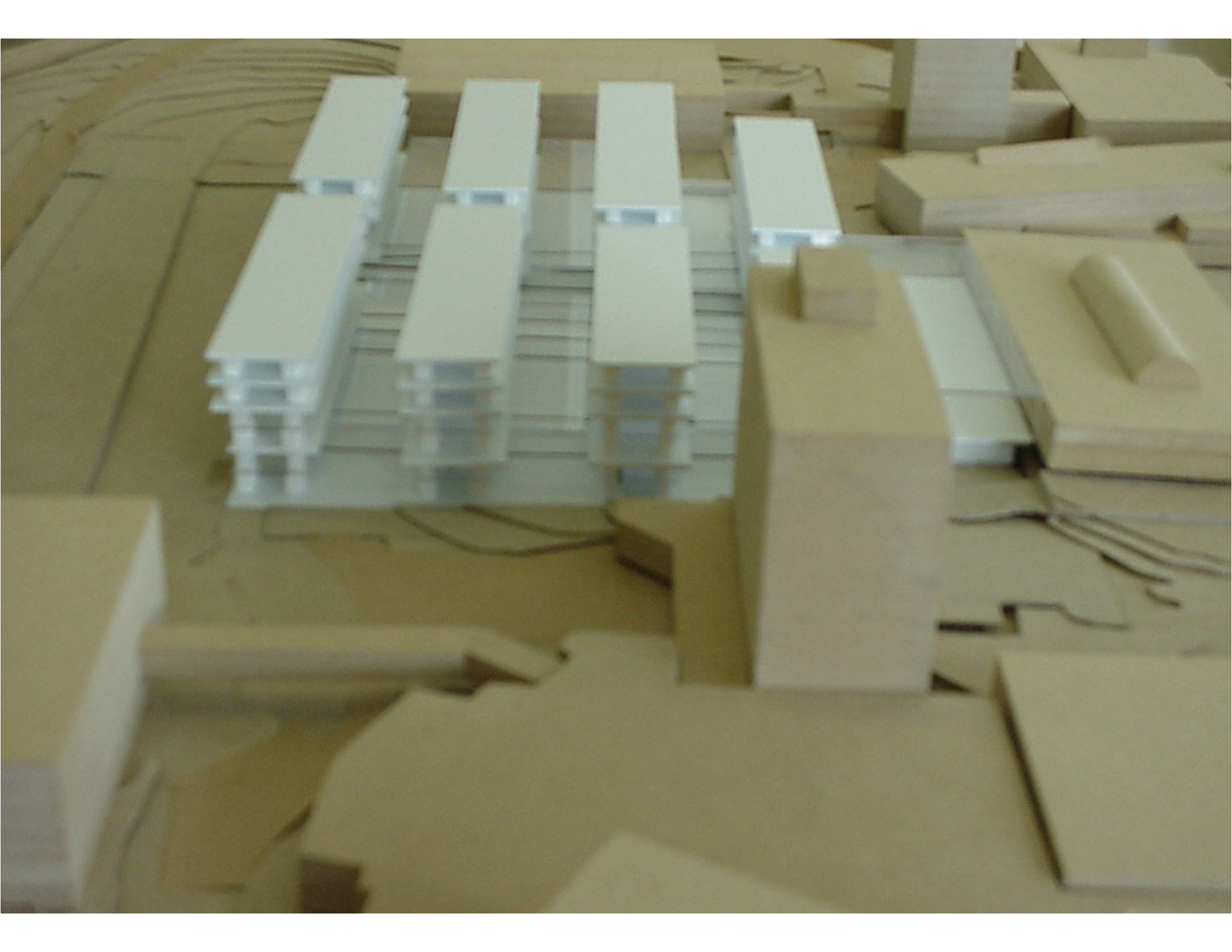
Jacky Durrie

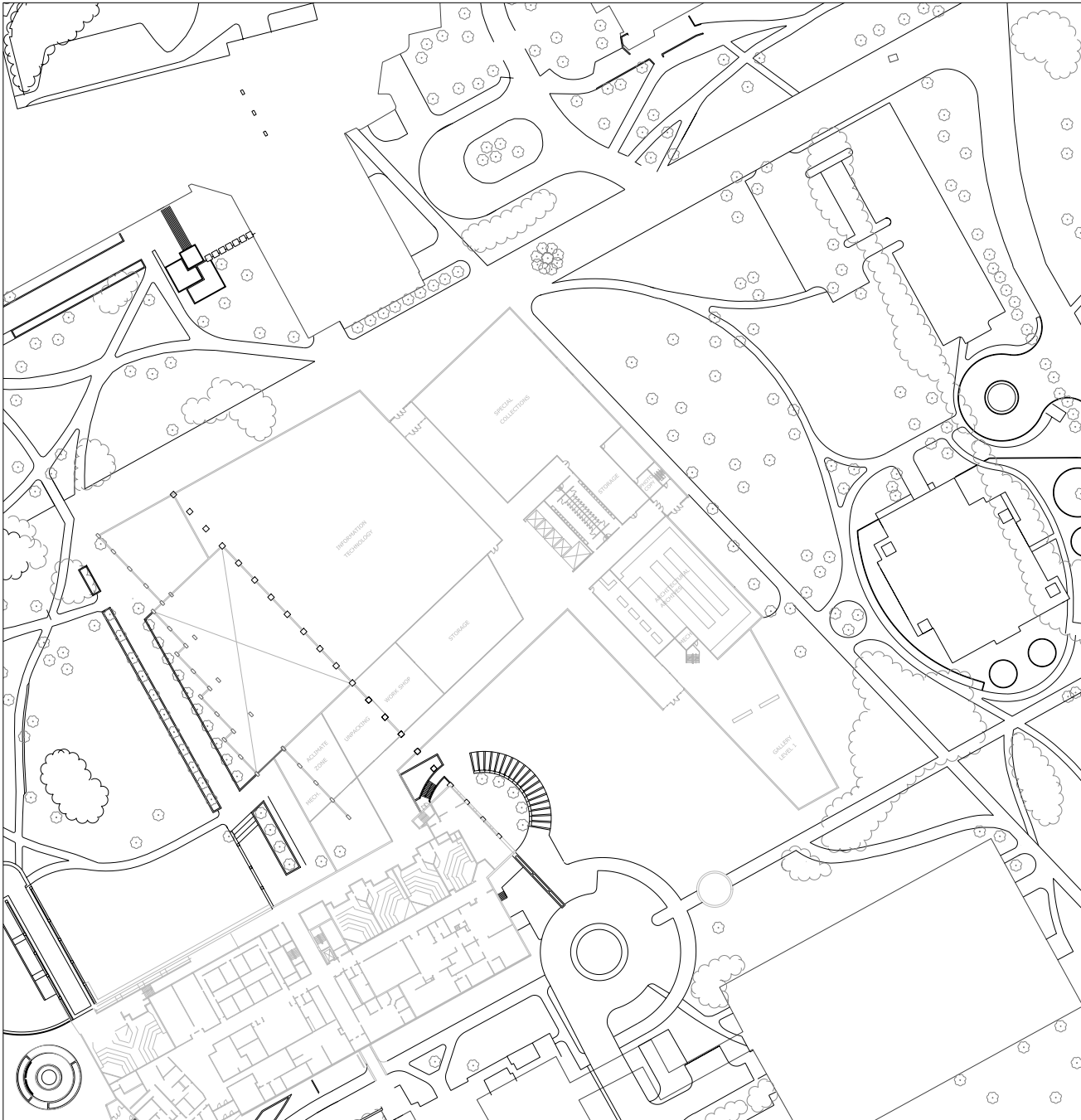
Legend

- 1. Circulation Desks and Administration
- 2. Meeting and Study Rooms
- 3. Main Reading Room
- 4. Auditorium
- 5. Mediated Collections and Gallery
- 6. Reference and Periodicals
- 7. Copy and Print
- 8. Student Work Areas

- 9. Information Commons
- 10. Main Stacks
- 11. Information Technology Department
- 12. Food Services
- 13. Mechanical and Service Area
- 14. Underground Parking







FLOOR PLAN - LEVEL 1
SCALE 1:500

